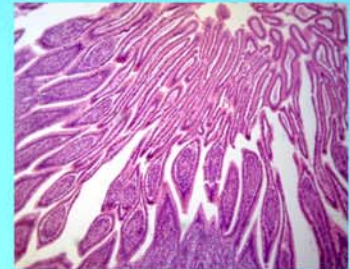




LABOMED, INC.

www.labomed.com
spectro@labomed.com



LB-212 Binocular Digital Microscope with Wide Field Plane-Scope Eyepiece, Camera and Software (1.3MP)

With 1.3 Megapixel CMOS image sensor, the output images have high Signal to Noise Ratio;
High definition images and videos, high frame rate;
Professional software of real-time review, take photos and videos, measurement.
Easy to operate;
LED light illumination, saves energy;
Compact and flexible, ideally suited for desktop, laboratory worktable;



LABOMED, INC.

www.labomed.com
spectro@labomed.com

LB-212 Binocular Digital Microscope with Wide Field Plane-Scope Eyepiece, Camera and Software (1.3MP)

Introduction

LB-212 Binocular Digital Microscopes features a built in 1.3 MegaPixel Digital Microscopy Camera and professional software offering high resolution and user friendly operation. This combination of microscope, digital imaging system and software is easy to operate offering outstanding performance. It can take photos, videos and do measurement functions. The objectives are 4x, 10x, 40x and 100x for clear observation. Illumination is LED with variable light intensity. The microscope is primarily designed for students for image capturing and distant sharing. This unique combination of microscope, image system and software makes the LB-212 microscopy system a professional tool for education applications. This microscope also provides a superior cost effective solution for computer interactive laboratory and clinical environments.

Applications

This microscope is ideally suited for school biological education and medical analyses area. We can use it to observe all kinds of slides. It also has the applications to examine coins, stamps, PC boards, insects, and other objects, especially at the lower powers.

Technical Specifications

Binocular Head:	Binocular eyepiece, 45° Inclined, 360° Rotatable with built-in CMOS camera, 1/3" 1.3MP, resolution: 1280×1024, USB2.0 Connection.
Software:	Scopelimage 9.0 for capturing image and showing live video on PC screen, Saving images as BMP, JPG files, software also has previewing, video, measuring comparing, saving and deleting functions. Range of viewing field: >100% Supports multi-language: Chinese, English, French, German, Japanese and Korea.
Eyepiece:	Wide Field Plane-Scope Eyepiece: WF10×/18
Objective:	Achromatic Objective: 4×, 10×, 40×(S), 100×(S, Oil)
Stage:	Double Layers Mechanical Stage: 115×125mm, Moving Range X-Y : 70×20mm, with Ø2-Ø30mm Iris Diaphragm And Ø32 Filter
Condenser:	ABBE Condenser: N.A. 1.25 (Φ2-Φ30mm) with Frosted Filters
Focus:	Coaxial Coarse And Fine Focusing Adjustable
Illumination:	With an AC adapter, Built-in LED Lamp
System requirement:	<ul style="list-style-type: none">• PC: Windows XP or above, Mac OS X.• CPU 200 Mhz or above• RAM 128 MB or above• Hard disk 500 MB or above• CD-ROM drive• USB plug
Accessories:	Packed in carton, with operation manual, dust cover, AC adapter and USB cable.
Optional:	Rechargeable battery (only for LED illumination)
Dimension & G.W:	29cm × 23cm × 42cm, 5kg
Packing:	Carton, 4 sets/carton: 29cm × 88cm × 42cm, 20kg

