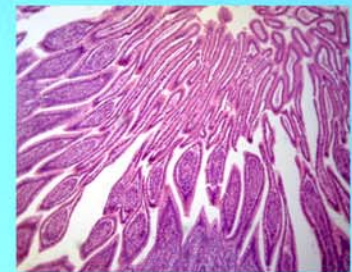




LABOMED, INC.

www.labomed.com
spectro@labomed.com



LB-350 Zoom Stereo Binocular Microscope with Greenough Optical System, LED Transmitting and Reflecting Illumination, High Point Eyepiece, and 110mm Working Distance

Updated optical design, large depth of field, stereoscopic effect.
Ergonomic design, sharp image display, wide viewing field and easy to operate.
Providing a wide viewing field of $\Phi 23\text{mm}$ with the zoom ratio of 1:7.6.
Transmitting & Reflecting LED Illumination.
Ideal instrument in academic, medical and industrial fields.



www.labomed.com
spectro@labomed.com

LB-350 Zoom Stereo Binocular Microscope with Greenough Optical System, LED Transmitting and Reflecting Illumination, High Point Eyepiece, and 110mm Working Distance

Introduction

Stereo microscopes are also known as low magnification and dissecting microscopes. LB-350 Stereo Zoom Binocular Microscope with Greenough Optical System, LED Transmitting and Reflecting Illumination, High Point Eyepiece, and 110mm Working Distance offers high quality 3D images throughout the zoom range. Optional eyepieces and auxiliary objectives expand magnification range and working distance.

LB-350 is a very popular zoom stereo microscope. Optional cold light and ring light can be chosen for this microscope.

Applications

LB-350 Stereo Zoom Binocular Microscope with Greenough Optical System, LED Transmitting and Reflecting Illumination, High Point Eyepiece, and 110mm Working Distance is of great value in a variety of applications such as school education, circuit board repair, circuit board inspection, surface mount technology work, electronics inspection, coin collecting, gemology and gemstone setting, engraving, repair and inspection of small parts.

Technical Specifications

Optical system:	Greenough
Viewing Head:	Binocular head, inclined at 45°, rotatable 360°, Interpupillary Distance 54-76mm
Eyepiece:	10×/Φ23mm high point, diopter adjustable
Objective:	Zoom objective 0.66×~5×
Zoom Ratio:	1:7.6
Zoom Mode:	Axis zoom
Magnification:	6.6×~50×
Working Distance:	110mm
Illumination:	LED Reflecting illumination 3W LED Transmitting illumination 3W
Package & Dimension:	32cm*30cm*42cm, 1pc/carton, 6kg

