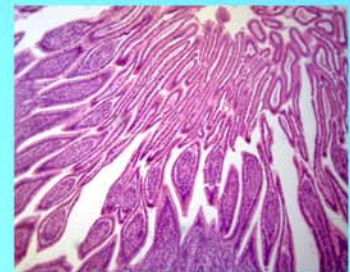




LABOMED, INC.

www.labomed.com
spectro@labomed.com



LB-206 Binocular Digital Biological Microscope with Seidentopf Binocular Head, Wide Field Eyepiece, Backward Quadruple Nosepiece, Infinity E-Plan Objectives, and 3.2MP Camera

Excellent infinite optical system, outstanding image quality with high resolution and definition.

Dustproof, moisture-proof, built-in chip.

Light distribution 20:80, eyepiece observation synchronized with digital imaging without switching.

Built-in 3.2MP digital camera system, 1/2" CMOS color sensor.

USB2.0 connection without external power supply.

Available for WINDOWS 2000/XP/7/Vista system.



www.labomed.com
spectro@labomed.com

LB-206 Binocular Digital Biological Microscope with Seidentopf Binocular Head, Wide Field Eyepiece, Backward Quadruple Nosepiece, Infinity E-Plan Objectives, and 3.2MP Camera

Introduction

LB-206 Binocular Digital Biological Microscope with Seidentopf Binocular Head, Wide Field Eyepiece, Backward Quadruple Nosepiece, Infinity E-Plan Objectives, and 3.2MP Camera is a high level microscope which is specially designed for college education, medical and laboratory study. It adopts an Infinite optical system, beautiful structure and ergonomic design. With an innovative optical and structure design idea, excellent optical performance and easy to operate system, this biological microscope makes your works enjoyable.

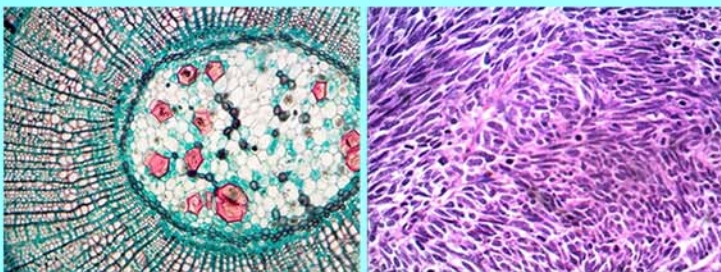
Applications

LB-206 Binocular Digital Biological Microscope with Seidentopf Binocular Head, Wide Field Eyepiece, Backward Quadruple Nosepiece, Infinity E-Plan Objectives, and 3.2MP Camera is an ideal instrument in biological, histological, pathological, bacteriology, immunizations and pharmacy field and can be widely used in medical and sanitary establishments, laboratories, institutes, academic laboratories, colleges and universities.

Technical Specifications

Optical System:	Infinite Optical System
Digital Camera:	Built-in 3.2MP digital camera system, 1/2" CMOS color sensor.
Viewing Head:	Seidentopf Binocular Viewing Head, Inclined at 30°, 360° Rotatable, Interpupillary 50-75mm
Eyepiece:	WF10×/20, WF16×/13 (optional), Reticule Eyepiece WF 10X-18 mm (0.1mm) (optional), Reticule Eyepiece WF 10X-20 mm (0.1mm) (optional)
Infinity E-Plan Objectives:	4×, 10×, 40× (S), 100× (Oil) (S), Plan 20× (optional), Plan 60× (S) (optional)
Nosepiece:	Backward Quadruple Nosepiece, Backward Quintuple Nosepiece (optional)
Focusing:	Coaxial Coarse & Fine Focusing knobs, Travel Range: 26mm, Scale: 2μm
Stage:	Stage Size: 145×140mm, Cross Travel 76×52mm, Two Slide Holder
Condenser:	Abbe Condenser NA1.25 with Iris Diaphragm
Illumination:	6V/20W Halogen Lamp, 6V/30W Halogen Lamp (optional), 3W-LED Illumination Systems (non-rechargeable) (optional), 0.3W-LED Illumination Systems (Rechargeable) (optional)
Field Diaphragm:	Field Diaphragm (optional)
Dark Field:	N.A.0.9 (Dry) Dark Field Attachment (optional)
Polarizing Attachment:	Analyzer/Polarizer (optional)
Phase contrast unit:	With Infinite Plan Objectives 10× /20× /40× /100× (optional)
Filter:	Blue, Green (optional), Yellow (optional)
Mirror:	Reflect Mirror (optional)
Cable Winding Device:	Cable Winding Device (optional)
Dimension & G.W.:	42cm*28cm*45cm, 9kg

Sample Images



Labomed, Inc., 2728 S. La Cienega Blvd. Los Angeles CA 90034 U.S.A.

TEL (310) 202-0811 FAX (310) 202-7286 Email: spectro@labomed.com www.labomed.com