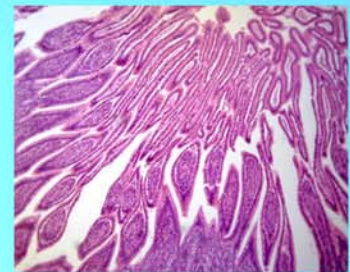




LABOMED, INC.

www.labomed.com
spectro@labomed.com



LB-226 Trinocular Biological Microscope with LED Illumination and Six Achromatic Objectives (4x, 10x, 20x, 40x, 60x, 100x)

New machining facility and advanced alignment technology;
With complete functions and outfit of binocular microscope;
Comfortable operation with updated and ergonomic design;
LED light illumination, saves energy;
Compact and flexible, ideally suited for desktop, laboratory worktable;
Eyepoint height and interpupillary distance can be adjusted to fit for observation.



LABOMED, INC.

www.labomed.com
spectro@labomed.com

LB-226 Trinocular Biological Microscope with LED Illumination and Six Achromatic Objectives (4x, 10x, 20x, 40x, 60x, 100x)

Introduction

LB-226 Trinocular Biological Microscope with LED Illumination and Six Achromatic Objectives (4x, 10x, 20x, 40x, 60x, 100x) is an economic, practical and easy to operate trinocular microscope, this microscope is widely used in the educational, academic, agricultural and study fields. With a trinocular head and a digital camera (or digital eyepiece), it can be easily converted to a digital microscope.

Applications

LB-226 Trinocular Biological Microscope with LED Illumination and Six Achromatic Objectives (4x, 10x, 20x, 40x, 60x, 100x) is ideally suited for the school biological education and medical analyses areas. We can use it to observe all kinds of slides. It can be widely used in clinics, hospitals, schools, academic labs and scientific research departments.

Technical Specifications

Viewing Head:	Seidentopf Trinocular Head, Inclined at 30°, Interpupillary Distance 55-75mm
Eyepiece:	WF10×/18
Objective:	Achromatic Objective 4×, 10×, 20×, 40×, 60×, 100× (oil)
Nosepiece:	Backward Quadruple Nosepiece
Stage:	Double Layer Mechanical Stage 132×142mm/ 75×40mm
Focusing:	Coaxial Coarse & Fine Adjustment, Moving Range 24mm, Fine Division 0.004mm, Fine Stroke 0.4mm per rotation, coarse stroke 37.7 per rotation
Condenser:	Abbe NA 1.20 with Iris Diaphragm & Filter
Illumination:	LED 3W, Brightness Adjustable Kohler illumination (optional)
Immersion Oil:	5ml immersion oil
Dimension & G.W.	39.5cm*26.5cm*50cm, 7kg



Labomed, Inc., 2728 S. La Cienega Blvd. Los Angeles CA 90034 U.S.A.

TEL (310) 202-0811 FAX (310) 202-7286 Email: spectro@labomed.com www.labomed.com