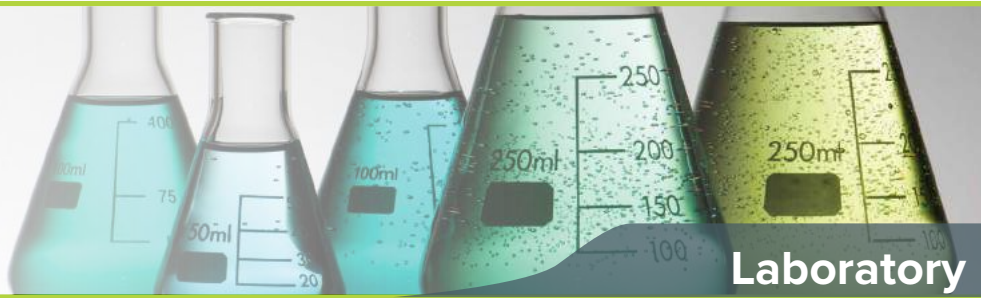




Eclipse[®] Precision
Page 4



Laboratory



Highland[®] Precision
Page 9



Education



MTB Baby and Toddler
Page 52



Health & Fitness



Raven[®] Retail
Page 36



Food Services



PTM Platform
Page 44



Industrial

2017 General Catalogue

THE RIGHT BALANCE
Speed, Performance, Value

CONTENTS

BALANCES	3
ECLIPSE® ANALYTICAL AND PRECISION BALANCES.....	4-5
NIMBUS® ANALYTICAL AND PRECISION BALANCES.....	6-7
PGW PRECISION BALANCES.....	8
HIGHLAND® PORTABLE PRECISION BALANCES.....	9
CORE® PORTABLE COMPACT BALANCES.....	10
CB COMPACT BALANCES.....	11
DUNE® PORTABLE COMPACT BALANCES.....	12
TBB TRIPLE-BEAM BALANCES.....	13
MOISTURE ANALYSER	14
PMB MOISTURE ANALYSER.....	15
BENCH & FLOOR WEIGHING SCALES	16
ASTRO® COMPACT SCALES.....	17
LBK WEIGHING SCALES.....	18
CBK BENCH CHECKWEIGHING SCALES.....	19
CPWPLUS WEIGHING.....	20
GBK BENCH CHECKWEIGHING SCALES.....	21
ABK BENCH WEIGHING SCALES.....	22
GFK FLOOR CHECKWEIGHING SCALES.....	23
AFK FLOOR WEIGHING SCALES.....	24
COUNTING SCALES	25
CBC BENCH COUNTING SCALES.....	26
CBD BENCH COUNTING SCALES.....	27
GBC BENCH COUNTING SCALES.....	28
GFC FLOOR COUNTING SCALES.....	29
WASHDOWN SCALES	30
WARRIOR® WASHDOWN SCALES.....	31
WBW WASHDOWN SCALES.....	32
RETAIL SCALES	33
WBZ WASHDOWN RETAIL SCALES.....	34
AZEXTRA PRICE-COMPUTING RETAIL SCALES.....	35
RAVEN® PRICE-COMPUTING RETAIL SCALES.....	36
CCEU COIN COUNTING SCALE.....	37
CRANE SCALES	38
SHS CRANE SCALES.....	39
LHS CRANE SCALES.....	40
IHS CRANE SCALES.....	41
HEAVY DUTY SCALES	42
AELP PALLET BEAMS.....	43
PTM DRUM AND WHEELCHAIR SCALE.....	44
PT PLATFORMS.....	45
PTS PALLET TRUCK SCALE.....	46
INDICATORS	47
AE 402 INDICATOR.....	48
GK & GK-M INDICATORS.....	49
GC COUNTING INDICATOR.....	50
HEALTH AND FITNESS SCALES	51
MTB BABY AND TODDLER SCALE.....	52
MDW PHYSICIAN SCALES.....	53
MUW MEDICAL SCALES.....	54
MCW CHAIR WEIGHING SCALE.....	55
VETERINARY SCALES	56
MTB VETERINARIAN SCALE.....	57
CPWPLUS L WEIGHING.....	58
WEIGHTS & SETS	59
OIML WEIGHT SETS.....	60
WEIGHT TOLERANCES	61
ACCESSORIES	62-65
GLOSSARY	66-67



Adam Equipment manufactures balances and scales for laboratory, industrial, medical, retail, and education customers worldwide. Founded in the United Kingdom in 1972, Adam has strategically established a network of offices throughout the world to provide a high level of service to its customers everywhere. With facilities in the United Kingdom, United States, South Africa, Australia, Germany and China, Adam maintains a strong global presence.

From its beginnings, Adam has focused on delivering products with the right balance of speed, performance and value. Adam is committed to manufacturing reliable products with proven technology and user-friendly features. The company takes great pride in providing comprehensive, responsive support and assistance to every customer. Adam Equipment UK is ISO 9001-2008 and NMO accredited to certify balances and scales for trade use.

Adam's commitment to ongoing, customer-driven product development ensures that the company will continue to move forward, bringing customers the weighing solutions they need now and in the future.

Icon:

	External Calibration		IP66-Rated Waterproof
	Internal Calibration		GLP/ISO Printouts
	External Battery		Weigh-Below
	Internal Rechargeable Battery		Security Devices
	Time		Multiple Weighing Units
	Date		Backlit Display
	USB		Tare
	RS-232 Port		Approved for Trade



EC Type Approved - Approval is required for selling goods by weight and in other specified weighing applications in Europe. EC Type Approval can be granted for most types of Non-Automatic Weighing Instruments (NAWI), after the correct testing procedure is performed by an approved body. A test report and certificate are issued to the manufacturer or importer of the product that has undergone the type approval test.



Featured Product:
Nimbus Balance

Designed for advanced scientists and researchers, the Eclipse occupies minimal space on the laboratory work bench, yet maintains optimal performance. Its elegant capacitive touch keypad provides highly efficient operation and an increased lifespan of the balance. The smooth surface allows fingerprints and spills to be wiped off easily. Other standard features include solid metal housing, adjustable levelling feet, USB and RS-232 interfaces, and a large backlit LCD.

Nimbus analytical and precision balances offer the best in today's processing technology to deliver results with greater accuracy. Metal housing provides the durability to withstand chemicals, increasing longevity of the balance. With large navigation buttons and dual tare keys, the intuitive keypad is easy to use, so operation requires only minimal training.

Adam Equipment's Highland portable precision balance is well-suited for lab work, field use, classrooms or industrial applications. The Highland's ShockProtect® helps safeguard the balance against damage from overloads or shock loads. Adam's unique HandiCal® internal calibration provides the simplicity of calibrating with built-in mass, and the versatility to calibrate externally using certified masses for traceability.

Compact and durable, the Core is unbeatable for basic weighing tasks. Core's sturdy housing is easy to clean and protects against spills. A basic keypad with dual tare keys makes operation simple. Complete with built-in overload protection, removable draught shield, AC adapter and integrated security slot, the Core provides outstanding value.

The CB compact scale boasts best-in-class performance and value. Its stainless steel pan is easy to clean, while the CB's one-piece housing and sealed keypad help protect internal components from dirt and spills. Overload protection helps prevent damage from excess weight. CB's compact size makes it easy to transport and store. A built-in battery allows operation anywhere, while auto power-off conserves battery life.

The Dune offers all the features needed for quick, reliable weighing in the lab or in the field. Its low-profile design is user-friendly, enabling fast setup and uncomplicated operation using just three buttons: on/off, unit, and tare. The Dune is equipped with a large pan and splashproof keypad to allow easy cleaning. Weighing results are provided in grams, ounces, or pounds.

Sturdy metal housing and a grade 304 stainless steel weighing pan make TBB ideal for classroom use. With a larger body than other triple-beam balances, TBB features innovative tripod legs and an integrated weigh-below hook, simplifying density and specific gravity determination. A security slot for optional Kensington-type lock and cable help deter theft.



FEATURES

- Vivid, backlit LCD easily visible in any lighting conditions
- Capacity tracker built into display for easily monitoring possible overloads
- Programmable backlight can be set to “always on,” “always off” or “light only when weighing”
- Large, grade 304 stainless steel pan allows easy cleaning
- Overload protection helps prevent damage to internal components
- Removable draught shield on models with 0.001g readability helps to reduce errors caused by air currents
- Robust metal housing protects internal components in harsh environments
- Sealed keypad protects against dirt and spills
- USB and RS-232 interfaces provide speedy communication with computers and printers
- Level indicator and adjustable feet ensure proper balance setup for optimum weighing results
- The illuminated capacitive touch keypad provides responsive operation, and its durable, smooth surface can be easily wiped down
- External calibration allows for verification and adjustment with weights
- Multilingual display allows use in many different countries
- Printouts include date and time for data tracking within Good Laboratory Practices (GLP) guidelines
- Security password control prevents unauthorised access
- Selectable digital filtering for animal/dynamic weighing delivers stable results for moving subjects
- AC adapter included

Analytical Models

Fully featured series – our most intuitive balance to date

GENERAL SPECIFICATIONS

- Weighing units: g, kg, mg, lb, ct, GN, dr, oz, ozt, dwt, mm, tl.T, tl.H, tl.S, ti, T, custom unit
- Interface: RS-232, USB
- Power Supply: 18VDC 50/60Hz 830mA adapter
- Display: Backlit LCD with capacity tracker with 24mm-high digits
- Calibration: External / Internal calibration
- Housing: Die-cast aluminum
- Operating Temperature: 15° to 35°C

APPLICATIONS

- Weighing
- Parts counting
- Percentage weighing
- Checkweighing
- Check counting
- Dynamic / animal weighing
- Density determination

WEIGHTS AND DIMENSIONS (Internal Calibration same as External Calibration)

- **EBL 104e, 164e, 214e, 254e, 314e:**
Net Weight - 5.5kg, Overall Dim. - 220x340x344mm (wxdxh)
- **EBL 223e, 423e, 623e, 823e:**
Net Weight - 4.5kg, Overall Dim. - 220x310x270mm (wxdxh)
- **EBL 1602e, 2602e, 3602e, 4602e, 6202e, 4201e, 6201e, 8201e:**
Net Weight - 4.5kg, Overall Dim. - 220x310x89mm (wxdxh)
- **EBL 12001e, 16001e, 22001e, 32001e:**
Net Weight - 7.3kg, Overall Dim. - 401x460x102mm (wxdxh)
- **EBL 12001P, 16001P, 22001P, 32001P (Pillar Attachment):**
Net Weight - 7.5kg, Overall Dim. - 401x500x600mm (wxdxh)

ACCESSORIES

Item number	Description
104008036	Anti-vibration table
3074010267	USB cable
1060012713	Density kit for 90mm ø
1060012714	Density kit for 120mm ø and 160mm ø pan
3012313007	Dust cover for 0.1mg balances
3012313008	Dust cover for 0.01g and 0.001g balances
1120011156	ATP thermal printer
3126011263	ATP thermal printer paper
3126011281	ATP thermal printer paper (pack of 10)
3014011014	RS-232 cable M-F
600002028	Adam DU data collection program
302126013	Weigh-below hook for 400x300mm pan
3021210953	Weigh-below hook
700660290	Calibration certificate
3014013041	Security cable

Item number	Description
700100232	E2 50g calibration weight
700100022	E2 100g calibration weight
700100023	E2 200g calibration weight
700100007	F1 100g calibration weight
700100012	F1 200g calibration weight
700100008	F1 500g calibration weight
700100009	F1 1kg calibration weight
700100010	F1 2kg calibration weight
700100013	F1 5kg calibration weight
700100209	2 x F1 5kg calibration weights
700100207	E2 1g to 200g calibration weight set



104008036



1120011156



1060012714

External Calibration

Model	Capacity	Readability	Pan Size
EBL 104e	100g	0.0001g	90mm ø
EBL 164e	160g	0.0001g	90mm ø
EBL 214e	210g	0.0001g	90mm ø
EBL 254e	250g	0.0001g	90mm ø
EBL 314e	310g	0.0001g	90mm ø
EBL 223e	220g	0.001g	120mm ø
EBL 423e	420g	0.001g	120mm ø
EBL 623e	620g	0.001g	160mm ø
EBL 823e	820g	0.001g	160mm ø
EBL 1602e	1600g	0.01g	160mm ø
EBL 2602e	2600g	0.01g	160mm ø
EBL 3602e	3600g	0.01g	160mm ø
EBL 4602e	4600g	0.01g	160mm ø
EBL 6202e	6200g	0.01g	160mm ø
EBL 4201e	4200g	0.1g	160mm ø
EBL 6201e	6200g	0.1g	160mm ø
EBL 8201e	8200g	0.1g	160mm ø
EBL 12001e	12000g	0.1g	400x300mm
EBL 16001e	16000g	0.1g	400x300mm
EBL 22001e	22000g	0.1g	400x300mm
EBL 32001e	32000g	0.1g	400x300mm
EBL 12001P	12000g	0.1g	400x300mm
EBL 16001P	16000g	0.1g	400x300mm
EBL 22001P	22000g	0.1g	400x300mm
EBL 32001P	32000g	0.1g	400x300mm

Precision Models



Internal Calibration

Model	Capacity	Readability	Pan Size
EBL 104i	100g	0.0001g	90mm ø
EBL 164i	160g	0.0001g	90mm ø
EBL 214i	210g	0.0001g	90mm ø
EBL 254i	250g	0.0001g	90mm ø
EBL 314i	310g	0.0001g	90mm ø
EBL 223i	220g	0.001g	120mm ø
EBL 423i	420g	0.001g	120mm ø
EBL 623i	620g	0.001g	160mm ø
EBL 823i	820g	0.001g	160mm ø
EBL 1602i	1600g	0.01g	160mm ø
EBL 2602i	2600g	0.01g	160mm ø
EBL 3602i	3600g	0.01g	160mm ø
EBL 4602i	4600g	0.01g	160mm ø
EBL 6202i	6200g	0.01g	160mm ø





FEATURES

- Vivid, backlit LCD easily visible in any lighting conditions
- Colour-coded keys facilitate quick recognition of the most frequently used buttons
- Level indicator and adjusting feet ensure proper balance setup for optimum weighing results
- Removable draught shield on models with 0.001g readability helps to reduce errors caused by air currents
- Robust metal housing protects internal components in harsh environments
- Sealed keypad protects against dirt and accidental spills
- USB and RS-232 interfaces provide speedy communication with computers and printers
- Large, grade 304 stainless steel pan allows easy cleaning
- Lockdown device to secure balance
- Handles for safely lifting the balance
- External calibration allows for verification and adjustment with weights
- Printouts include date and time for data tracking within Good Laboratory Practices (GLP) guidelines
- Selectable digital filtering helps minimise effects of vibration and disturbances
- Zero-tracking feature ensures display returns to zero reading
- Multilingual display allows use in many different countries
- AC adapter included

Analytical Models

Innovative design combined with powerful performance in a premier balance

GENERAL SPECIFICATIONS

- Weighing units: g, mg, kg, ct, GN, N, oz, ozt, dwt, T, custom unit
- Interface: RS-232, USB
- Power Supply: 18VDC 50/60Hz 830mA adapter
- Display: Backlit LCD with 20mm-high digits
- Calibration: External and internal calibration
- Housing: Extruded aluminum base with a die-cast aluminum case
- Operating Temperature: 15° to 35°C

APPLICATIONS

- Weighing
- Parts counting
- Percentage weighing
- Dynamic / animal weighing
- Density determination

WEIGHT AND DIMENSIONS (Internal Calibration same as External Calibration)

- **NBL 84e, NBL 124e, NBL 164e, NBL 214e, NBL 254e:**
Net Weight - 4.5kg, Overall Dim. - 220x340x344mm (wxdxh)
- **NBL 223e, NBL 423e:** Net Weight - 4.5kg, Overall Dim. - 220x310x270mm (wxdxh)
- **NBL 1602e, NBL 2602e, NBL 3602e, NBL 4602e, NBL 4201e, NBL 6201e, NBL 8201e:**
Net Weight - 4.5kg, Overall Dim. - 220x310x89mm (wxdxh)
- **NBL 12001e, NBL 16001e, NBL 22001e:**
Net Weight - 7.3kg, Overall Dim. - 401x460x102mm (wxdxh)
- **NBL 12001P, NBL 16001P, NBL 22001P (Pillar Attachment):**
Net Weight - 7.5kg, Overall Dim. - 401x500x600mm (wxdxh)

ACCESSORIES

Item number	Description
104008036	Anti-vibration table
3074010267	USB cable
1060012713	Density kit for 90mm ø
1060012714	Density kit for 120mm ø and 160mm ø pan
3012313007	Dust cover for 0.1mg balances
3012313008	Dust cover for 0.01g and 0.001g balances
3012013012	In-use wet cover for 400x300mm pan
3012013010	In-use wet cover for 120mm ø and 160mm ø pan
3012013009	In-use cover for 90mm ø pan
1120011156	ATP thermal printer
3126011263	ATP thermal printer paper
3126011281	ATP thermal printer paper (pack of 10)
3014011014	RS-232 cable M-F
600002028	Adam DU data collection program
302126013	Weigh-below hook for 400x300mm pan
3021210953	Weigh-below hook
700660290	Calibration certificate
2010012712	Rechargeable Battery Pack (for NBL 223, 423, 1602, 2602, 3602, 4602, 4201, 6201 and 8201 models only, factory fitted)
3014013041	Security cable

Item number	Description
700100232	E2 50g calibration weight
700100022	E2 100g calibration weight
700100023	E2 200g calibration weight
700100007	F1 100g calibration weight
700100012	F1 200g calibration weight
700100008	F1 500g calibration weight
700100009	F1 1kg calibration weight
700100010	F1 2kg calibration weight
700100013	F1 5kg calibration weight
700100209	2 x F1 5kg calibration weights
700100207	E2 1g to 200g calibration weight set
700100027	F1 1g - 100g calibration weight set
700100049	F1 1g - 200g calibration weight set
700100042	F1 1g - 500g calibration weight set
700100070	F1 1g - 2kg calibration weight set



104008036



1120011156



1060012714

External Calibration

Model	Capacity	Readability	Pan Size
NBL 84e	80g	0.0001g	90mm ø
NBL 124e	120g	0.0001g	90mm ø
NBL 164e	160g	0.0001g	90mm ø
NBL 214e	210g	0.0001g	90mm ø
NBL 254e	250g	0.0001g	90mm ø
NBL 223e	220g	0.001g	120mm ø
NBL 423e	420g	0.001g	120mm ø
NBL 623e	620g	0.001g	160mm ø
NBL 823e	820g	0.001g	160mm ø
NBL 1602e	1600g	0.01g	160mm ø
NBL 2602e	2600g	0.01g	160mm ø
NBL 3602e	3600g	0.01g	160mm ø
NBL 4602e	4600g	0.01g	160mm ø
NBL 4201e	4200g	0.1g	160mm ø
NBL 6201e	6200g	0.1g	160mm ø
NBL 8201e	8200g	0.1g	160mm ø
NBL 12001e	12000g	0.1g	400x300mm
NBL 16001e	16000g	0.1g	400x300mm
NBL 22001e	22000g	0.1g	400x300mm
NBL 12001P	12000g	0.1g	400x300mm
NBL 16001P	16000g	0.1g	400x300mm
NBL 22001P	22000g	0.1g	400x300mm

Precision Models



Internal Calibration

Model	Capacity	Readability	Pan Size
NBL 84i	80g	0.0001g	90mm ø
NBL 124i	120g	0.0001g	90mm ø
NBL 164i	160g	0.0001g	90mm ø
NBL 214i	210g	0.0001g	90mm ø
NBL 254i	250g	0.0001g	90mm ø
NBL 223i	220g	0.001g	120mm ø
NBL 423i	420g	0.001g	120mm ø
NBL 623i	620g	0.001g	160mm ø
NBL 823i	820g	0.001g	160mm ø
NBL 1602i	1600g	0.01g	160mm ø
NBL 2602i	2600g	0.01g	160mm ø
NBL 3602i	3600g	0.01g	160mm ø
NBL 4602i	4600g	0.01g	160mm ø



FEATURES



- Vivid, backlit LCD easily visible in any lighting conditions
- Capacity tracker built into display for easily monitoring possible overloads
- Programmable backlight can be set to “always on,” “always off” or “light only when weighing”
- HandiCal® internal calibration eliminates need for external weight set
- External calibration allows for verification and adjustment with weights
- RS-232 interface is available to provide speedy connection to computers and printers
- Printouts include date and time for data tracking within Good Laboratory Practices (GLP) guidelines
- Selectable digital filtering helps minimise effects of vibration and disturbances
- Audible overload alarm warns when capacity is exceeded
- Security password control prevents unauthorised access
- Simple operation allows quick startup and use with little or no training

The PGW brings value to labs, offering a complete range of models with advanced features and intuitive software

GENERAL SPECIFICATIONS

- Weighing units: mg, g, kg, lb, oz, N, GN, ct, dr, dwt, mm, ozt, T, ti, tl.H, tl.S, tl.T, custom unit
- Interface: RS-232
- Power Supply: 12VDC 50/60Hz 800mA adapter
- Display: Backlit LCD with 24mm -high digits
- Calibration: External calibration
- Housing: Die-cast aluminum
- Operating Temperature: 10° to 40°C

Model	Capacity	Readability	Pan Size
PGW 153M	150g	0.001g	140x140mm
PGW 253M	250g	0.001g	140x140mm
PGW 453M	450g	0.001g	140x140mm
PGW 753M	750g	0.001g	140x140mm
PGW 1502M	1500g	0.01g	192x192mm
PGW 2502M	2500g	0.01g	192x192mm
PGW 3502M	3500g	0.01g	192x192mm
PGW 4502M	4500g	0.01g	192x192mm

APPLICATIONS

- Weighing
- Parts counting
- Percentage weighing
- Checkweighing
- Dynamic / animal weighing
- Density determination



WEIGHT AND DIMENSIONS

- 0.001g Models: Net Weight (kg)- 7.6kg, Overall Dim.- 251x358x104mm (wxdxh)
- 0.01g: Net Weight (kg)- 7.6kg, Overall Dim.- 251x358x104mm (wxdxh)

ACCESSORIES

Item number	Description
104008036	Anti-vibration table
106007453	Density kit for 0.001g models only
301007078	Dust cover
301207077	In-use cover
1120011156	ATP thermal printer
3126011263	ATP thermal printer paper
3126011281	ATP thermal printer paper (pack of 10)
3074010266	RS-232 cable (Null Modem)
3074010507	RS-232 to USB adapter (must order corresponding RS-232 cable)
700100046	Kensington-type lock and cable
600002028	Adam DU data collection program
3021210953	Weigh-below hook

Item number	Description
700100027	F1 1g - 100g calibration weight set
700100070	F1 1g - 2kg calibration weight set
700100012	F1 200g calibration weight
700100008	F1 500g calibration weight
700100009	F1 1kg calibration weight
700100010	F1 2kg calibration weight



104008036



1120011156



700100046

HIGHLAND® PORTABLE PRECISION BALANCES



FEATURES

- Vivid, backlit LCD easily visible in any lighting conditions
- Programmable backlight can be set to "always on," "always off" or "light only when weighing"
- Capacity tracker built into display for easily monitoring possible overloads
- Balances stack efficiently and safely to save space (120mm pan size only)
- Colour-coded keys facilitate quick recognition of the most frequently used buttons
- Dual tare keys facilitate operation with either the left or right hand
- Level indicator and adjustable feet ensure proper balance setup for optimum weighing results
- Security slot for optional Kensington-type lock and cable to help prevent theft
- Large, grade 304 stainless steel pan allows easy cleaning
- RS-232 interface for connection to computers and printers
- USB interface included for faster data communication
- Solid ABS housing is durable for industrial uses
- Three-point ShockProtect® feature helps prevent overload damage to internal components
- Hook included for weighing below the balance
- Internal calibration eliminates need for external weight set
- Audible overload alarm warns when capacity has been exceeded
- External calibration allows for verification and adjustment with weights
- Selectable digital filtering helps minimise effects of vibration and disturbances
- Parts counting with preset sample sizes
- Memory accumulation totals results
- Zero-tracking feature ensures display returns to zero reading
- AC adapter included
- Rechargeable battery included for operation almost anywhere
- Programmable auto power-off to save energy

Full of features, the Highland is an exceptional value in precision weighing

GENERAL SPECIFICATIONS

- Weighing units: g, lb, oz, N, GN, ct, dr, dwt, mm, ozt, T, tl.H, tl.S, tl.T (HCB-M: g, ct only)
- Interface: RS-232 / USB
- Power Supply: 12VDC 50/60Hz 800mA adapter / Internal rechargeable battery
- Display: Backlit LCD with 18mm-high digits
- Calibration: External calibration / Internal manual calibration (HCB-M: External calibration only)
- Housing: ABS plastic
- Operating Temperature: 0° to 40°C

APPLICATIONS

- Weighing
- Parts counting
- Percentage weighing
- Accumulation of weight

WEIGHT AND DIMENSIONS

- Net Weight - 2kg, Overall Dim. - 174x252x80mm (wxdxh)

Model	Capacity	Readability	Pan Size
HCB 123	120g	0.001g	120mm ø
HCB 153	150g	0.005g	120mm ø
HCB 302	300g	0.01g	120mm ø
HCB 602	600g	0.02g	120mm ø
HCB 602H	600g	0.01g	120mm ø
HCB 1002	1000g	0.01g	120mm ø
HCB 1502	1500g	0.05g	120mm ø
NEW HCB 2202	2200g	0.01g	120mm ø
HCB 3001	3000g	0.1g	120mm ø
NEW HCB 6001	6000g	0.1g	145mm ø

Approved Models EC Type Approved

Model	Capacity	Readability	Pan Size
HCB 602M	600g	0.01g	120mm ø
HCB 1002M	1000g	0.01g	120mm ø
HCB 5001M	5000g	0.1g	120mm ø



ACCESSORIES

Item number	Description
3074010267	USB cable
700400103	RS-232 cable
308002042	Hard carrying case with lock for CQT/HCB
308232034	In-use cover (pack of 5)
308232035	In-use cover (pack of 10)
308232030	In-use cover
1120011156	ATP thermal printer
3126011263	ATP thermal printer paper
3126011281	ATP thermal printer paper (pack of 10)
700100046	Kensington-type lock and cable
600002028	Adam DU data collection program
700660290	Calibration certificate

Item number	Description
700100007	F1 100g calibration weight
700100012	F1 200g calibration weight
700100009	F1 1kg calibration weight
700100010	F1 2kg calibration weight
700100013	F1 5kg calibration weight



308002042



1120011156



700100046



FEATURES

- Vivid, backlit LCD easily visible in any lighting conditions
- Programmable backlight can be set to “always on,” “always off” or “light only when weighing”
- Balances stack efficiently and safely to save space (120mm pan size only)
- Colour-coded keys facilitate quick recognition of the most frequently used buttons
- Dual tare keys facilitate operation with either the left or right hand
- Security slot for optional Kensington-type lock and cable to help prevent theft
- Large, grade 304 stainless steel pan allows easy cleaning
- Rugged construction stands up to industrial use
- Three-point ShockProtect® feature helps prevent overload damage to internal components
- Hook included for weighing below the balance
- Auto power-off to save energy
- Audible overload alarm warns when capacity has been exceeded
- External calibration allows for verification and adjustment with weights
- Zero-tracking feature ensures display returns to zero reading
- Operates with AC adapter (included) or batteries (not included)

The most durable compact balance in its class, the Core is unmatched in value

GENERAL SPECIFICATIONS

- Weighing units: g, kg, lb, oz, N, GN, ct, dr, tL.T
- Power Supply: 12VAC 50/60Hz 150mA adapter / 6 x AA batteries
- Display: Backlit LCD with 18mm-high digits
- Calibration: External calibration
- Housing: ABS plastic
- Operating Temperature: 0° to 40°C

Model	Capacity	Readability	Pan Size
CQT 202	200g	0.01g	120mm ø
CQT 251	250g	0.1g	120mm ø
CQT 601	600g	0.1g	120mm ø
CQT 1501	1500g	0.1g	120mm ø
CQT 2000	2000g	1g	145mm ø
CQT 2601	2600g	0.1g	145mm ø
CQT 5000	5000g	1g	145mm ø

APPLICATIONS

- Weighing



WEIGHT AND DIMENSIONS

- Net Weight - 0.9kg, Overall Dim. - 171x250x80mm (wxdxh)

ACCESSORIES

Item number	Description
308002042	Hard carrying case with lock for CQT/HCB
308232033	In-use cover
308232036	In-use cover (pack of 5)
308232037	In-use cover (pack of 10)
700100046	Kensington-type lock and cable
700660290	Calibration certificate
700100035	M1 1g - 100g calibration weight set
700100071	M1 1g - 2kg calibration weight set
700100072	M1 200g calibration weight
700100060	M1 500g calibration weight
700100029	M1 1kg calibration weight
700100030	M1 2kg calibration weight
700100012	F1 200g calibration weight





FEATURES

- Vivid, backlit LCD easily visible in any lighting conditions
- Large, grade 304 stainless steel pan allows easy cleaning
- Lightweight design simplifies transport and portability
- Sealed keypad protects against dirt and spills
- Level indicator and adjustable feet ensure proper balance setup for optimum weighing results
- Auto power-off to save energy
- External calibration allows for verification and adjustment with weights
- Simple operation allows quick startup and use with little or no training
- Zero-tracking feature ensures display returns to zero reading
- Low-battery indicator alerts users when batteries need replacement

Provides features and consistency for portable performance

GENERAL SPECIFICATIONS

- Weighing units: g, lb, oz
- Power Supply: 2 x AA batteries / Optional 6VDC 200mA adapter
- Display: LCD with 12mm-high digits
- Calibration: External calibration
- Housing: ABS plastic
- Operating Temperature: 0° to 40°C

Model	Capacity	Readability	Pan Size
CB 501	500g	0.1g	130mm ø
CB 1001	1000g	0.1g	130mm ø
CB 3000	3000g	1g	130mm ø



APPLICATIONS

- Weighing

WEIGHT AND DIMENSIONS

- Net Weight - 0.4kg, Overall Dim. - 160x205x45mm (wxdxh)

ACCESSORIES

Item number	Description
700400120	6VDC 200mA adapter
700230015	In-use cover
700660290	Calibration certificate
700100060	M1 500g calibration weight (CB 501)
700100029	M1 1kg calibration weight (CB 1001)
700100030	M1 2kg calibration weight (CB 3000)



FEATURES

- High-contrast display is easily visible from a distance
- Colour-coded keys facilitate quick recognition of the most frequently used buttons
- Lightweight design simplifies transport and portability
- Overload protection helps prevent damage to internal components
- Sealed keypad protects against dirt and accidental spills
- Large platform removes easily for speedy cleaning
- Auto power-off to save energy
- External calibration allows for verification and adjustment with weights
- Zero-tracking feature ensures display returns to zero reading
- Operates with AC adapter (included) or batteries (not included)

Streamlined design for basic weighing in the lab, classroom or field

GENERAL SPECIFICATIONS

- Weighing units: g, oz
- Power Supply: 12VAC 50/60Hz 150mA adapter / 6 x AA batteries
- Display: LCD with 15mm-high digits
- Calibration: External calibration
- Housing: ABS plastic
- Operating Temperature: 0° to 40°C

	Model	Capacity	Readability	Pan Size
NEW	DCT 302	300g	0.01g	100mm ø
	DCT 201	200g	0.1g	145x145mm
NEW	DCT 601	600g	0.1g	145x145mm
NEW	DCT 2001	2000g	0.1g	145x145mm
	DCT 2000	2000g	1g	145x145mm
	DCT 5000	5000g	2g	145x145mm



APPLICATIONS

- Weighing

WEIGHT AND DIMENSIONS

- Net Weight - 0.5kg, Overall Dim. - 147x208x40mm (wxdxh)

ACCESSORIES

Item number	Description
700660290	Calibration certificate
700100072	M1 200g calibration weight (DCT 201)
700100060	M1 500g calibration weight (DCT601)
700100030	M1 2kg calibration weight (DCT2000)
700100012	F1 200g calibration weight (DCT302)
700100010	F1 2kg calibration weight (DCT2001)



FEATURES

- Optional hook enables below-balance weighing
- Security slot for optional Kensington-type lock and cable to help prevent theft
- Large, grade 304 stainless steel pan allows easy cleaning
- Magnetic damping slows pointer movement for faster readings
- Notched, tiered, graduated beams ensure positive positioning and accurate reading of results
- Storing space for weights included
- The TBB 2610T is equipped with a 225g tare range

A reliable, classic balance for performing mass measurement

GENERAL SPECIFICATIONS

- Weighing units: g
- Display: Graduated beam
- Calibration: External calibration
- Housing: Die-cast aluminum

Model	Capacity	Readability	Pan Size
TBB 2610S	2610g	0.1g	152mm ø
TBB 2610T	2610g	0.1g	152mm ø



APPLICATIONS

- Weighing

WEIGHT AND DIMENSIONS

- Net Weight - 2.7kg, Overall Dim. - 550x110x160mm (wxdxh)

ACCESSORIES

Item number	Description
700100046	Kensington-type lock and cable
700660290	Calibration certificate



700100046

MOISTURE ANALYSER

With simple operation and quick response time, Adam Equipment's PMB moisture analyser is top in its class for value. PMB sets a new standard for collecting and recording data, with USB and RS-232 interfaces to provide speedy connectivity. A second USB port allows storage of test programs and data on a flash drive. The PMB's automatic test-setting function enables easy recall for frequent testing of the same items without additional user programming.



Featured Product:
PMB Analyser



FEATURES

- Vivid, backlit LCD easily visible in any lighting conditions
- Programmable backlight can be set to “always on,” “always off” or “light only when weighing”
- Capacity tracker built into display for easily monitoring possible overloads
- Scratch-resistant aluminum housing protects internal components
- Colour-coded keys facilitate quick recognition of the most frequently used buttons
- Pan lifter allows easy placement and removal of samples
- RS-232 interface for connection to computers and printers
- USB host for memory card and USB I/O interface
- USB interface included for faster data communication
- Temperature range 50°C to 160°C in one-degree increments
- Three settings for heating sample include ramp-up, stepped temperatures and single temperature
- Seven preset drying modes allow test routines for several products
- Audible overload alarm warns when capacity has been exceeded
- Testing can be set to start automatically when lid closes
- Calibration for temperature and weight
- Multilingual display allows use in many different countries
- Quick and easy configuration using the keypad
- Zero-tracking feature ensures display returns to zero reading
- Internal memory stores 49 different recipes and up to 99 test results, and additional test results and settings can be stored on a flash drive
- Mains power cord

Superior connectivity in a moisture analyser, with two USB ports for data collection and computer or printer communications

GENERAL SPECIFICATIONS

- Weighing units: g, %M, %S, ATRO %M, ATRO %S
- Interface: RS-232 / USB
- Power Supply: Mains power cord
- Display: Backlit LCD with 24mm-high digits
- Calibration: External calibration
- Housing: Die-cast aluminum
- Operating Temperature: 0° to 40°C

NEW

Model	Capacity	Readability	Pan Size
PMB 53	50g	0.001g / 0.01%	100mm ø
PMB 163	160g	0.001g / 0.01%	100mm ø
PMB 202	200g	0.01g / 0.05%	100mm ø



APPLICATIONS

- Weighing
- Moisture determination

WEIGHT AND DIMENSIONS

- Net Weight - 6kg, Overall Dim. - 250x360x185mm (wxdxh)

ACCESSORIES

Item number	Description
104008036	Anti-vibration table
3074010267	USB cable
1070010636	Temperature calibration kit
301208188	In-use cover
3070013622	PMB glass fibre pads (pack of 200)
1120011156	ATP thermal printer
3126011263	ATP thermal printer paper
3126011281	ATP thermal printer paper (pack of 10)
3074010266	RS-232 cable (Null Modem)
307140001	Disposable sample pans (pack of 250)
700100046	Kensington-type lock and cable
600002028	Adam DU data collection program
700660290	Calibration certificate
700100027	F1 1g - 100g calibration weight set
700100014	F1 50g calibration weight (PMB 53)
700100007	F1 100g calibration weight (PMB 163)
700100012	F1 200g calibration weight (PMB 202)



1070010636



1120011156



307140001

BENCH & FLOOR WEIGHING SCALES

The all stainless steel Astro provides accurate measurements for weighing small objects or ingredients in a variety of industries. The durable construction of the Astro is splash proof and can quickly be wiped down. A large LCD shows results in green during normal weighing. If the scale is overloaded or is not set on a level surface, readings will be shown in red, clearly notifying the user that they are not receiving precise results. Astro comes with an AC adapter but can be powered by battery for applications that require a portable weighing solution.

Lightweight and portable, the LBK is a winning value for factories, warehouses, labs and offices. Cleaning is simple with the removable stainless steel pan and sealed keypad, while a large, backlit display makes it easy to view the weight. For speedy operation, colour-coded keys highlight frequently used functions.

Reliability and durable construction make the CBK unmatched in value for industrial weighing. Fully featured and easy to use, the CBK tackles a variety of applications, including parts counting, percentage weighing, check counting and accumulation. Checkweighing is simplified with LED limit indicators, while the built-in memory stores limits for up to 10 samples.

Adam Equipment's CPWplus bench and floor scales provide valuable features and various configurations to meet the demands of many industrial operations. With simple operation, rugged construction and an easy-to-clean stainless steel pan, the CPWplus offers exceptional value for warehouse, manufacturing, and shipping and receiving tasks.

Designed for demanding industrial use, GBK and GBK-M scales are durable and consistently deliver fast readings. The GBK provides a sturdy type 304 stainless steel pan and non-slip rubber feet to ensure stability in any location. Other features include overload protection and a large, easy-to-read backlit LCD. The GBK-M version is approved and suitable for use on products sold by weight.

With easy operation and reliable performance, the ABK is well-suited for demanding industrial use. The type 304 stainless steel pan and indicator offer protection against dust and water, ensuring longevity. ABK features a large, backlit display and checkweighing limit lights to streamline shipping tasks and reduce data entry errors.

GFK scales feature large platforms, high capacities and robust construction, making them ideal for heavy-duty industrial tasks. Equipped with non-slip rubber feet, overload protection, and a type 304 stainless steel pan, GFK brings durability and outstanding value to manufacturing environments. The GFK-M version is approved and suitable for use on products sold by weight.

Sturdy and reliable, AFK scales offer a dependable weighing solution for many industrial applications. To ensure longevity, a type 304 stainless steel indicator boasts superior sealing against dust and water. The backlit display is easy to read, streamlining shipping and receiving tasks and helping prevent data entry errors. Checkweighing is simple, as colour indicators show if the weight is under, over, or within preset limits.



Featured Product:
ABK Bench Weighing Scale



FEATURES

- Vivid, backlit LCD easily visible in any lighting conditions
- Adjustable levelling feet help optimise setup
- Colour-coded keys facilitate quick recognition of the most frequently used buttons
- Large, grade 304 stainless steel pan allows easy cleaning
- Overload protection helps prevent damage to internal components
- Rugged stainless steel housing for ultimate durability
- Sealed keypad protects against dirt and spills
- Splash-proof housing, keypad and display mean easy cleaning
- Auto power-off to save energy
- External calibration allows for verification and adjustment with weights
- Operates with AC adapter (included) or batteries (not included)
- Low-battery indicator alerts users when batteries need replacement

Sleekly designed, the compact Astro is easy to clean between weighing tasks

GENERAL SPECIFICATIONS

- Weighing units: g, kg, lb, lb:oz, oz
- Power Supply: 6VDC 500mA adapter / 2 x AAA batteries
- Display: LCD with 18mm-high digits
- Calibration: External calibration
- Housing: Stainless steel
- Operating Temperature: 0° to 40°C

Model	Capacity	Readability	Pan Size
ASC 2001	2000g	0.1g	160x180mm
ASC 4000	4000g	0.5g	160x180mm
ASC 8000	8000g	1g	160x180mm



APPLICATIONS

- Weighing

WEIGHT AND DIMENSIONS

- Net Weight - .85kg, Overall Dim. - 212x167x66mm (wxdxh)

ACCESSORIES

Item number	Description
700660290	Calibration certificate



FEATURES

- Vivid, backlit LCD easily visible in any lighting conditions
- Colour-coded keys facilitate quick recognition of the most frequently used buttons
- Level indicator and adjustable feet ensure proper balance setup for optimum weighing results
- Large, grade 304 stainless steel pan allows easy cleaning
- Lightweight design simplifies transport and portability
- Splash-proof housing, keypad and display mean easy cleaning and peace of mind
- Solid ABS housing is durable for industrial uses
- Audible overload alarm warns when capacity has been exceeded
- External calibration allows for verification and adjustment with weights
- Parts counting with preset sample sizes
- Zero-tracking feature ensures display returns to zero reading
- AC adapter included
- Rechargeable battery included for operation almost anywhere
- Programmable auto power-off to save energy

The LBK provides the best value for quick, basic weighing

GENERAL SPECIFICATIONS

- Weighing units: g, kg, lb, lb:oz, oz
- Power Supply: Mains power cord / Internal rechargeable battery
- Display: Backlit LCD with 24mm-high digits
- Calibration: External calibration
- Housing: ABS plastic / Stainless Steel Top Pan
- Operating Temperature: 0° to 40°C

Model	Capacity	Readability	Pan Size
LBK 3	3kg	0.5g	250x180mm
LBK 6	6kg	1g	250x180mm
LBK 12	12kg	2g	250x180mm
LBK 30	30kg	5g	250x180mm



APPLICATIONS

- Weighing
- Parts counting
- Percentage weighing

WEIGHT AND DIMENSIONS

- Net Weight - 1.8kg, Overall Dim. - 250x307x110mm (wxdxh)

ACCESSORIES

Item number	Description
700200056	In-use cover
700200063	In-use cover (pack of 5)
700200064	In-use cover (pack of 10)
700660290	Calibration certificate



700200056



FEATURES

- Vivid, backlit LCD easily visible in any lighting conditions
- Capacity tracker built into display for easily monitoring possible overloads
- Checkweighing LEDs light to clearly show under, over and acceptable limits
- Programmable backlight can be set to “always on,” “always off” or “light only when weighing”
- Colour-coded keys facilitate quick recognition of the most frequently used buttons
- Level indicator and adjustable feet ensure proper balance setup for optimum weighing results
- Large, grade 304 stainless steel pan allows easy cleaning
- RS-232 interface for connection to computers and printers
- Optional USB interface simplifies data communication
- Rugged construction stands up to industrial use
- Sealed keypad protects against dirt and spills
- Overload protection helps prevent damage to internal components
- Checkweighing with audible alarm
- External calibration allows for verification and adjustment with weights
- Memory accumulation totals results
- Preset tare function speeds the process of repetitive weighing
- Parts counting with freely selectable sample sizes
- Parts counting optimisation automatically refines piece weight as parts are added
- Programmable for counting to a preset number of parts
- Printouts include date and time for data tracking within Good Laboratory Practices (GLP) guidelines
- Simple operation allows quick startup and use with little or no training
- Selectable digital filtering helps minimise effects of vibration and disturbances
- Zero-tracking feature ensures display returns to zero reading
- Rechargeable battery included for operation almost anywhere
- Programmable auto power-off to save energy

Powerful choice for reliability in industrial weighing and counting

GENERAL SPECIFICATIONS

- Weighing units: g, kg, lb, lb:oz, oz
- Interface: RS-232 / Optional USB
- Power Supply: Mains power cord / Internal rechargeable battery
- Display: Backlit LCD with 20mm-high digits
- Calibration: External calibration
- Housing: ABS plastic / Stainless Steel Top Pan
- Operating Temperature: 0° to 40°C

Model	Capacity	Readability	Pan Size
CBK 4	4kg	0.1g	225x275mm
CBK 8	8kg	0.2g	225x275mm
CBK 8H	8kg	0.1g	225x275mm
CBK 16	16kg	0.5g	225x275mm
CBK 32	32kg	1g	225x275mm
CBK 48	48kg	2g	225x275mm

APPLICATIONS

- Weighing
- Parts counting
- Percentage weighing
- Checkweighing
- Accumulation of weight

WEIGHT AND DIMENSIONS

- Net Weight - 4.1kg, Overall Dim.- 315x355x110mm (wxdxh)

Approved Models EC Type Approved

Model	Capacity	Readability	Pan Size
CBK 3M	3kg	1g	225x275mm
CBK 6M	6kg	2g	225x275mm
CBK 15M	15kg	5g	225x275mm
CBK 30M	30kg	10g	225x275mm



ACCESSORIES

Item number	Description
302000001	Hard carrying case with lock
302205006	In-use cover
700200057	In-use cover (pack of 5)
700200058	In-use cover (pack of 10)
1120011156	ATP thermal printer
3126011263	ATP thermal printer paper
3126011281	ATP thermal printer paper (pack of 10)
3074010266	RS-232 cable (null-modem)
3074010507	RS-232 to USB adapter (must order corresponding RS-232 cable)
600002028	Adam DU data collection program
202000001	Weigh-below hook (factory-fitted)
700660290	Calibration certificate



302000001



3074010266



1120011156

FEATURES

- Vivid, backlit LCD easily visible in any lighting conditions
- Programmable backlight can be set to “always on,” “always off” or “light only when weighing”
- Colour-coded keys facilitate quick recognition of the most frequently used buttons
- Large, grade 304 stainless steel pan allows easy cleaning
- Lightweight design simplifies transport and portability
- Rugged construction stands up to industrial use
- Splash-proof housing, keypad and display mean easy cleaning
- Wall-mount bracket for placing indicator on vertical surface
- Auto power-off to save energy
- External calibration allows for verification and adjustment with weights
- Hold function freezes the displayed weight, allowing time to lapse without losing the result
- Selectable digital filtering helps minimise effects of vibration and disturbances
- Zero-tracking feature ensures display returns to zero reading



The most flexible series of scales, offering multiple configurations to suit a variety of applications

GENERAL SPECIFICATIONS

- Weighing units: kg, lb, lb:oz, oz
- Interface: RS-232
- Power Supply: 12VDC 50/60Hz 150mA adapter / 6 x AA batteries (300x300mm model only)
- Power Supply: 12VDC 50/60Hz 500mA adapter / Internal Rechargeable Battery (M & L models only)
- Display: Backlit LCD with 22mm-high digits
- Calibration: External calibration
- Housing: Mild steel base / Stainless Steel Top Pan
- Operating Temperature: 0° to 40°C

Model	Capacity	Readability	Pan Size
CPWplus 6	6kg	0.002kg	300x300mm
CPWplus 15	15kg	0.005kg	300x300mm
CPWplus 35	35kg	0.01kg	300x300mm
CPWplus 75	75kg	0.02kg	300x300mm
CPWplus 150	150kg	0.05kg	300x300mm
CPWplus 200	200kg	0.05kg	300x300mm
CPWplus 35M	35kg	0.01kg	500x500mm
CPWplus 75M	75kg	0.02kg	500x500mm
CPWplus 150M	150kg	0.05kg	500x500mm
CPWplus 200M	200kg	0.05kg	500x500mm
CPWplus 35L	35kg	0.01kg	900x600mm
CPWplus 75L	75kg	0.02kg	900x600mm
CPWplus 150L	150kg	0.05kg	900x600mm
CPWplus 200L	200kg	0.05kg	900x600mm
CPWplus 300L	300kg	0.1kg	900x600mm

APPLICATIONS

- Weighing
- Display hold

WEIGHT AND DIMENSIONS

- **CPWplus 6, CPWplus 15, CPWplus 35, CPWplus 75, CPWplus 150, CPWplus 200:**
Net Weight - 4kg, Overall Dim.- 300x300x50mm (wxdxh)
- **CPWplus 35M, CPWplus 75M, CPWplus 150M, CPWplus 200M:**
Net Weight - 8.9kg, Overall Dim.- 500x500x78mm (wxdxh)
- **CPWplus 35L, CPWplus 75L, CPWplus 150L, CPWplus 200L, CPWplus 300L:**
Net Weight - 14.4kg, Overall Dim.- 900x600x78mm (wxdxh)



ACCESSORIES

Item number	Description
700100099	Hard carrying case with lock (300 x 300mm pan size only)
112001156	ATP thermal printer
3126011263	ATP thermal printer paper
3126011281	ATP thermal printer paper (pack of 10)
700200059	Non-slip rubber mat (CPWplus L only)
3074010266	RS-232 cable (null-modem)
3074010507	RS-232 to USB adapter (must order corresponding RS-232 cable)
600002028	Adam DU data collection program
700660290	Calibration certificate



700100099



600002028



112001156



FEATURES

- Vivid, backlit LCD easily visible in any lighting conditions
- Capacity tracker built into display for easily monitoring possible overloads
- Checkweighing LEDs light to clearly show under, over and acceptable limits
- Programmable backlight can be set to “always on,” “always off” or “light only when weighing”
- Colour-coded keys facilitate quick recognition of the most frequently used buttons
- Level indicator and adjusting feet ensure proper balance setup for optimum weighing results
- Large, grade 304 stainless steel pan allows easy cleaning
- RS-232 interface for connection to computers and printers
- Rugged construction stands up to industrial use
- Sealed keypad protects against dirt and spills
- Overload protection helps prevent damage to internal components
- Checkweighing with audible alarm
- External calibration allows for verification and adjustment with weights
- Memory accumulation totals results
- Parts counting with freely selectable sample sizes
- Parts counting optimisation automatically refines piece weight as parts are added
- Preset tare function speeds the process of repetitive weighing
- Selectable digital filtering helps minimise effects of vibration and disturbances
- Zero-tracking feature ensures display returns to zero reading
- Rechargeable battery included for operation almost anywhere
- Programmable auto power-off to save energy

The best solution for demanding industrial and manufacturing tasks

GENERAL SPECIFICATIONS

- Weighing units: g, kg
- Interface: RS-232, Optional USB
- Power Supply: Mains power cord / Internal rechargeable battery
- Display: Backlit LCD with 20mm-high digits
- Calibration: External calibration
- Housing: Die-cast aluminum /Stainless Steel Top Pan
- Operating Temperature: -10° to 40°C

Model	Capacity	Readability	Pan Size
GBK 8	8kg	0.1g	300x400mm
GBK 16	16kg	0.5g	300x400mm
GBK 32	32kg	1g	300x400mm
GBK 60	60kg	2g	300x400mm
GBK 120	120kg	5g	300x400mm

APPLICATIONS

- Weighing
- Parts counting
- Percentage weighing
- Checkweighing
- Dynamic / animal weighing
- Accumulation of weight

Approved Models EC Type Approved

Model	Capacity	Readability	Pan Size
GBK 6M	6kg	2g	300x400mm
GBK 15M	15kg	5g	300x400mm
GBK 30M	30kg	10g	300x400mm
GBK 60M	60kg	20g	300x400mm
GBK 150M	150kg	50g	300x400mm

WEIGHT AND DIMENSIONS

- Net Weight - 7.6kg, Overall Dim. - 300x520x680mm (wxdxh)



ACCESSORIES

Item number	Description
3052010526	In-use cover
1120011156	ATP thermal printer
3126011263	ATP thermal printer paper
3126011281	ATP thermal printer paper (pack of 10)
3074010266	RS-232 cable (null-modem)
3074010507	RS-232 to USB adapter (must order corresponding RS-232 cable)
600002028	Adam DU data collection program
700660290	Calibration certificate



600002028



1120011156



3052010526



FEATURES

- Vivid, backlit LCD easily visible in any lighting conditions
- Capacity tracker built into display for easily monitoring possible overloads
- Programmable backlight can be set to “always on,” “always off” or “light only when weighing”
- Checkweighing LEDs light to clearly show under, over and acceptable limits
- Colour-coded keys facilitate quick recognition of the most frequently used buttons
- Heavy-duty rubber feet ensure stability of unit
- Large, grade 304 stainless steel pan allows easy cleaning
- RS-232 interface for connection to computers and printers
- Rugged construction stands up to industrial use
- Sealed keypad protects against dirt and accidental spills
- Checkweighing with audible alarm
- External calibration allows for verification and adjustment with weights
- Parts counting with preset sample sizes
- Simple operation allows quick startup and use with little or no training
- Zero-tracking feature ensures display returns to zero reading
- AC adapter included
- Rechargeable battery included for operation almost anywhere
- Programmable auto power-off to save energy

Right combination of features and performance make the ABK a winner for industrial applications

GENERAL SPECIFICATIONS

- Weighing units: g, kg, lb, lb:oz, oz, N
- Interface: RS-232
- Power Supply: 12VDC 50/60Hz 800mA adapter / Internal rechargeable battery
- Display: Backlit LCD with 40mm-high digits
- Calibration: External calibration
- Housing: Stainless steel indicator with die-cast aluminum base
- Operating Temperature: -10° to 40°C

Model	Capacity	Readability	Pan Size
ABK 8	8kg	0.2g	300x400mm
ABK 16	16kg	0.5g	300x400mm
ABK 32	32kg	1g	300x400mm
ABK 60	60kg	2g	300x400mm
ABK 120	120kg	5g	300x400mm



APPLICATIONS

- Weighing
- Parts counting
- Checkweighing
- Dynamic / animal weighing
- Percentage weighing

WEIGHT AND DIMENSIONS

- Net Weight - 7.9kg, Overall Dim. - 300x520x610mm (wxdxh)

ACCESSORIES

Item number	Description
3102311619	In-use cover
1120011156	ATP thermal printer
3126011263	ATP thermal printer paper
3126011281	ATP thermal printer paper (pack of 10)
700400103	RS-232 cable
3074010507	RS-232 to USB adapter (must order corresponding RS-232 cable)
1100011297	AE402 relay box
600002028	Adam DU data collection program
700660290	Calibration certificate



700400103



1120011156



1100011297



FEATURES

- Vivid, backlit LCD easily visible in any lighting conditions
- Programmable backlight can be set to “always on,” “always off” or “light only when weighing”
- Capacity tracker built into display for easily monitoring possible overloads
- Checkweighing LEDs light to clearly show under, over and acceptable limits
- Adjustable leveling feet help optimise setup
- Colour-coded keys facilitate quick recognition of the most frequently used buttons
- Large, grade 304 stainless steel pan allows easy cleaning
- RS-232 interface for connection to computers and printers
- Sealed keypad protects against dirt and accidental spills
- Audible overload alarm warns when capacity has been exceeded
- Checkweighing with audible alarm
- Parts counting with freely selectable sample sizes
- Parts counting optimisation automatically refines piece weight as parts are added
- Preset tare function speeds the process of repetitive weighing
- Programmable for counting to a preset number of parts
- Selectable digital filtering helps minimise effects of vibration and disturbances
- Zero-tracking feature ensures display returns to zero reading
- Rechargeable battery included for operation almost anywhere
- Programmable auto power-off to save energy

Industrial scale's proven strength brings large-scale benefits

GENERAL SPECIFICATIONS

- Weighing units: g, kg
- Interface: RS-232, Optional USB
- Power Supply: Mains power cord / Internal rechargeable battery
- Display: Backlit LCD with 20mm-high digits
- Calibration: External calibration
- Housing: Die-cast aluminum / Stainless Steel Top Pan
- Operating Temperature: -10° to 40°C

Model	Capacity	Readability	Pan Size
GFK 75	75kg	5g	400x500mm
GFK 75H	75kg	1g	400x500mm
GFK 150	150kg	10g	400x500mm
GFK 150H	150kg	2g	400x500mm
GFK 300	300kg	20g	400x500mm
GFK 600	600kg	50g	600x800mm

APPLICATIONS

- Weighing
- Parts counting
- Percentage weighing
- Checkweighing
- Check counting
- Dynamic / animal weighing

Approved Models EC Type Approved

Model	Capacity	Readability	Pan Size
GFK 60M	60kg	20g	400x500mm
GFK 150M	150kg	50g	400x500mm
GFK 300M	300kg	100g	400x500mm



WEIGHT AND DIMENSIONS

- Net Weight - 12.5kg, Overall Dim.- 400x620x860mm (wxdxh)
- **GFK 600:** Net Weight - 25.5kg, Overall Dim.- 600x940x900mm (wxdxh)

ACCESSORIES

Item number	Description
3052010526	In-use cover
1120011156	ATP thermal printer
3126011263	ATP thermal printer paper
3126011281	ATP thermal printer paper (pack of 10)
3074010266	RS-232 cable (null-modem)
3074010507	RS-232 to USB adapter (must order corresponding RS-232 cable)
600002028	Adam DU data collection program
700660288	Calibration certificate (GFK 600)
700660290	Calibration certificate



600002028



1120011156



3052010526



FEATURES

- Vivid, backlit LCD easily visible in any lighting conditions
- Capacity tracker built into display for easily monitoring possible overloads
- Programmable backlight can be set to “always on,” “always off” or “light only when weighing”
- Checkweighing LEDs light to clearly show under, over and acceptable limits
- Colour-coded keys facilitate quick recognition of the most frequently used buttons
- Heavy-duty rubber feet ensure stability of unit
- Large, grade 304 stainless steel pan allows easy cleaning
- RS-232 interface for connection to computers and printers
- Rugged construction stands up to industrial use
- Sealed keypad protects against dirt and spills
- Wall-mount bracket for placing indicator on vertical surface
- Checkweighing with audible alarm
- External calibration allows for verification and adjustment with weights
- Parts counting with preset sample sizes
- Simple operation allows quick startup and use with little or no training
- Zero-tracking feature ensures display returns to zero reading
- AC adapter included
- Rechargeable battery included for operation almost anywhere
- Programmable auto power-off to save energy

Extra-large pan for weighing oversized items or counting large quantities

GENERAL SPECIFICATIONS

- Weighing units: g, kg, lb, lb:oz, oz, N
- Interface: RS-232
- Power Supply: 12VDC 50/60Hz 800mA adapter / Internal rechargeable battery
- Display: Backlit LCD with 40mm-high digits
- Calibration: External calibration
- Housing: Stainless steel indicator with die-cast aluminum base
- Operating Temperature: -10° to 40°C

Model	Capacity	Readability	Pan Size
AFK 75	75kg	5g	400x500mm
AFK 150	150kg	10g	400x500mm
AFK 300	300kg	20g	400x500mm
AFK 600	600kg	50g	600x800mm



APPLICATIONS

- Weighing
- Parts counting
- Percentage weighing
- Checkweighing
- Dynamic / animal weighing

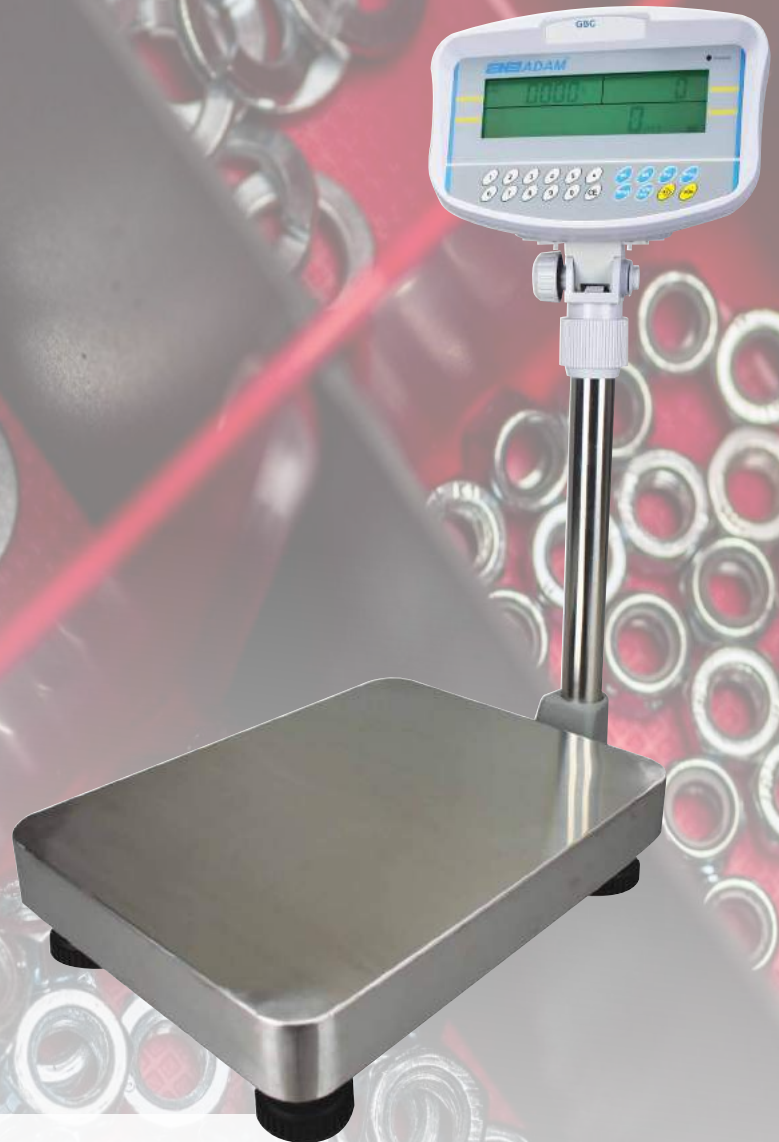
WEIGHT AND DIMENSIONS

- Net Weight - 12.8kg, Overall Dim. - 400x620x790mm (wxdxh)
- **AFK 600:** Net Weight - 24.3kg, Overall Dim. - 600x940x830mm (wxdxh)

ACCESSORIES

Item number	Description
3102311619	In-use cover
1120011156	ATP thermal printer
3126011263	ATP thermal printer paper
3126011281	ATP thermal printer paper (pack of 10)
700400103	RS-232 cable
3074010507	RS-232 to USB adapter (must order corresponding RS-232 cable)
1100011297	AE402 relay box
600002028	Adam DU data collection program
700660288	Calibration certificate (AFK 600)
700660290	Calibration certificate





Created to accommodate most counting needs, the CBC offers features to tally a wide range of parts in industrial and manufacturing operations. The CBC is lightweight and portable, simplifying the scale's transport between locations during inventory. Intuitive software tracks the count and automatically optimises unit weight for greater accuracy.

The CBD features the ability to connect to an optional larger remote base, making it easy to count large numbers of items in oversized containers. Users can quickly switch between weighing on the built-in pan or an auxiliary platform. Freely selectable sample size is available using the numeric keypad, and the backlit display provides visibility in any lighting conditions.

Designed for rugged industrial counting tasks, the GBC boasts a combination of durability and valuable features. This hardy scale contains a numeric keypad for unit weight and sample entry, while a backlit display shows total weight, unit weight and number of pieces. Other features include overload protection, a grade 304 stainless steel pan and non-slip rubber feet.

With the ability to handle capacities up to 300kg, the GFC floor counting scale is well-suited for heavy-duty industrial settings. A numeric keypad facilitates unit weight and sample entry, while the easy-to-read backlit display shows total weight, unit weight, and number of pieces. Features such as overload protection, sturdy non-slip rubber feet and a grade 304 stainless steel pan give GFC the durability to withstand any counting task.

Featured Product:
GBC Counting Scale



FEATURES

- Programmable backlight can be set to “always on,” “always off” or “light only when weighing”
- Backlit LCD shows weight, unit weight and count in one convenient location
- Colour-coded keys facilitate quick recognition of the most frequently used buttons
- Level indicator and adjusting feet ensure proper balance setup for optimum weighing results
- Large, grade 304 stainless steel pan allows easy cleaning
- RS-232 interface for connection to computers and printers
- Optional USB interface simplifies data communication
- Solid ABS housing is durable for industrial uses
- Auto power-off to save energy
- Parts counting with freely selectable sample sizes
- Internal counting resolution 1:600,000 for precision results
- Memory accumulation totals results
- Preset tare function speeds the process of repetitive weighing
- Zero-tracking feature ensures display returns to zero reading
- User can program alarm to sound when preset total is reached
- Rechargeable battery included for operation almost anywhere
- Programmable auto power-off to save energy

With three easy-to-read displays, CBC speeds up counting and check counting tasks

GENERAL SPECIFICATIONS

- Weighing units: g, kg
- Interface: RS-232, Optional USB
- Power Supply: Mains power cord / Internal rechargeable battery
- Display: Backlit LCD with 20mm-high digits
- Calibration: External calibration
- Housing: ABS plastic / Stainless Steel Top Pan
- Operating Temperature: 0° to 40°C

Model	Capacity	Readability	Pan Size
CBC 4	4kg	0.1g	225x275mm
CBC 8	8kg	0.2g	225x275mm
CBC 16	16kg	0.5g	225x275mm
CBC 32	32kg	1g	225x275mm
CBC 48	48kg	2g	225x275mm

APPLICATIONS

- Parts counting
- Check counting
- Weighing
- Accumulation of weight

Approved Models EC Type Approved

Model	Capacity	Readability	Pan Size
CBC 3M	3kg	1g	225x275mm
CBC 6M	6kg	2g	225x275mm
CBC 15M	15kg	5g	225x275mm
CBC 30M	30kg	10g	225x275mm

WEIGHT AND DIMENSIONS

- Net Weight - 4.4kg, Overall Dim. - 315x355x110mm (wxdxh)



ACCESSORIES

Item number	Description
302000001	Hard carrying case with lock
302205006	In-use wet cover
700200057	In-use wet cover (pack of 5)
700200058	In-use wet cover (pack of 10)
3074010266	RS-232 cable (null-modem)
3074010507	RS-232 to USB adapter (must order corresponding RS-232 cable)
1120011156	ATP thermal printer
3126011263	ATP thermal printer paper
3126011281	ATP thermal printer paper (pack of 10)
600002028	Adam DU data collection program
700660290	Calibration certificate



302000001



3074010266



1120011156



FEATURES

- Backlit LCD shows weight, unit weight and count in one convenient location
- Programmable backlight can be set to "always on," "always off" or "light only when weighing"
- Colour-coded keys facilitate quick recognition of the most frequently used buttons
- Level indicator and adjustable feet ensure proper balance setup for optimum weighing results
- Large, grade 304 stainless steel pan allows easy cleaning
- RS-232 interface for connection to computers and printers
- Optional USB interface simplifies data communication
- Overload protection helps prevent damage to internal components
- Rugged construction stands up to industrial use
- Supports connection to platforms with up to four load cells
- External calibration allows for verification and adjustment with weights
- Memory accumulation totals results
- Parts counting with freely selectable sample sizes
- Parts counting optimisation automatically refines piece weight as parts are added
- Preset tare function speeds the process of repetitive weighing
- Product Look Up (PLU) memory locations store up to 100 items for recall as needed
- Programmable for counting to a preset number of parts
- Quick and easy configuration using the keypad
- Security password control prevents unauthorised access
- Selectable digital filtering helps minimise effects of vibration and disturbances
- Zero-tracking feature ensures display returns to zero reading
- User can program alarm to sound when preset total is reached
- Rechargeable battery included for operation almost anywhere
- Programmable auto power-off to save energy

Expedite complex, high-volume counting tasks

GENERAL SPECIFICATIONS

- Weighing units: kg
- Interface: RS-232, Second scale port, Optional USB
- Power Supply: Mains power cord / Internal rechargeable battery
- Display: Backlit LCD with 20mm-high digits
- Calibration: External calibration
- Housing: ABS plastic / Stainless Steel Top Pan
- Operating Temperature: 0° to 40°C

Model	Capacity	Readability	Pan Size
CBD 4	4kg	0.1g	225x275mm
CBD 8	8kg	0.2g	225x275mm
CBD 16	16kg	0.5g	225x275mm
CBD 32	32kg	1g	225x275mm
CBD 48	48kg	2g	225x275mm



APPLICATIONS

- Weighing
- Parts counting
- Check counting
- Accumulation of weight
- Dual scale operation

WEIGHT AND DIMENSIONS

- Net Weight - 4.4kg, Overall Dim. - 315x355x110mm (wxdxh)

ACCESSORIES

Item number	Description
302000001	Hard carrying case with lock
302205006	In-use cover
700200057	In-use cover (pack of 5)
700200058	In-use cover (pack of 10)
112001156	ATP thermal printer
3126011263	ATP thermal printer paper
3126011281	ATP thermal printer paper (pack of 10)
3074010266	RS-232 cable (null-modem)
3074010507	RS-232 to USB adapter
	(must order corresponding RS-232 cable)
600002028	Adam DU data collection program
700660290	Calibration certificate



302000001



3074010266



112001156



FEATURES

- Backlit LCD shows weight, unit weight and count in one convenient location
- Programmable backlight can be set to “always on,” “always off” or “light only when weighing”
- Adjustable levelling feet help optimise setup
- Colour-coded keys facilitate quick recognition of the most frequently used buttons
- RS-232 interface for connection to computers and printers
- Rugged construction stands up to industrial use
- Splash-proof housing, keypad and display mean easy cleaning and peace of mind
- Audible overload alarm warns when capacity has been exceeded
- External calibration allows for verification and adjustment with weights
- Internal counting resolution 1:600,000 for precise results
- Parts counting with freely selectable sample sizes
- Parts counting optimisation automatically refines piece weight as parts are added
- Preset tare function speeds the process of repetitive weighing
- Printouts include date and time for data tracking within Good Laboratory Practices (GLP) guidelines
- Zero-tracking feature ensures display returns to zero reading
- User can program alarm to sound when preset total is reached
- Rechargeable battery included for operation almost anywhere
- Programmable auto power-off to save energy

Exceptional durability for industrial counting needs

GENERAL SPECIFICATIONS

- Weighing units: kg
- Interface: RS-232, Optional USB
- Power Supply: Mains power cord / Internal rechargeable battery
- Display: Backlit LCD with 20mm-high digits
- Calibration: External calibration
- Housing: Die-cast aluminum / stainless steel top pan
- Operating Temperature: -10° to 40°C

Model	Capacity	Readability	Pan Size
GBC 16	16kg	0.5g	300x400mm
GBC 32	32kg	1g	300x400mm
GBC 60	60kg	2g	300x400mm



APPLICATIONS

- Weighing
- Parts counting
- Check counting

WEIGHT AND DIMENSIONS

- Net Weight - 7.6kg, Overall Dim. - 300x520x680mm (wxdxh)

ACCESSORIES

Item number	Description
3052010526	In-use cover
1120011156	ATP thermal printer
3126011263	ATP thermal printer paper
3126011281	ATP thermal printer paper (pack of 10)
3074010266	RS-232 cable (null-modem)
3074010507	RS-232 to USB adapter (must order corresponding RS-232 cable)
600002028	Adam DU data collection program
700660290	Calibration certificate



600002028



1120011156



3052010526



FEATURES

- Backlit LCD shows weight, unit weight and count in one convenient location
- Programmable backlight can be set to “always on,” “always off” or “light only when weighing”
- Adjustable levelling feet help optimise setup
- Colour-coded keys facilitate quick recognition of the most frequently used buttons
- Large, grade 304 stainless steel pan allows easy cleaning
- RS-232 interface for connection to computers and printers
- Rugged construction stands up to industrial use
- Audible overload alarm warns when capacity has been exceeded
- External calibration allows for verification and adjustment with weights
- Internal counting resolution 1:600,000 for precise results
- Parts counting with freely selectable sample sizes
- Parts counting optimisation automatically refines piece weight as parts are added
- Preset tare function speeds the process of repetitive weighing
- Selectable digital filtering helps minimise effects of vibration and disturbances
- Zero-tracking feature ensures display returns to zero reading
- User can program alarm to sound when preset total is reached
- Rechargeable battery included for operation almost anywhere
- Programmable auto power-off to save energy

GFC delivers the power and efficiency needed to count large quantities of oversized items

GENERAL SPECIFICATIONS

- Weighing units: kg
- Interface: RS-232, Optional USB
- Power Supply: Mains power cord / Internal rechargeable battery
- Display: Backlit LCD with 20mm-high digits
- Calibration: External calibration
- Housing: Die Cast Aluminium / Stainless Steel Top Pan
- Operating Temperature: -10° to 40°C

Model	Capacity	Readability	Pan Size
GFC 75	75kg	0.005kg	400x500mm
GFC 150	150kg	0.01kg	400x500mm
GFC 300	300kg	0.02kg	400x500mm



APPLICATIONS

- Weighing
- Parts counting
- Check counting

WEIGHT AND DIMENSIONS

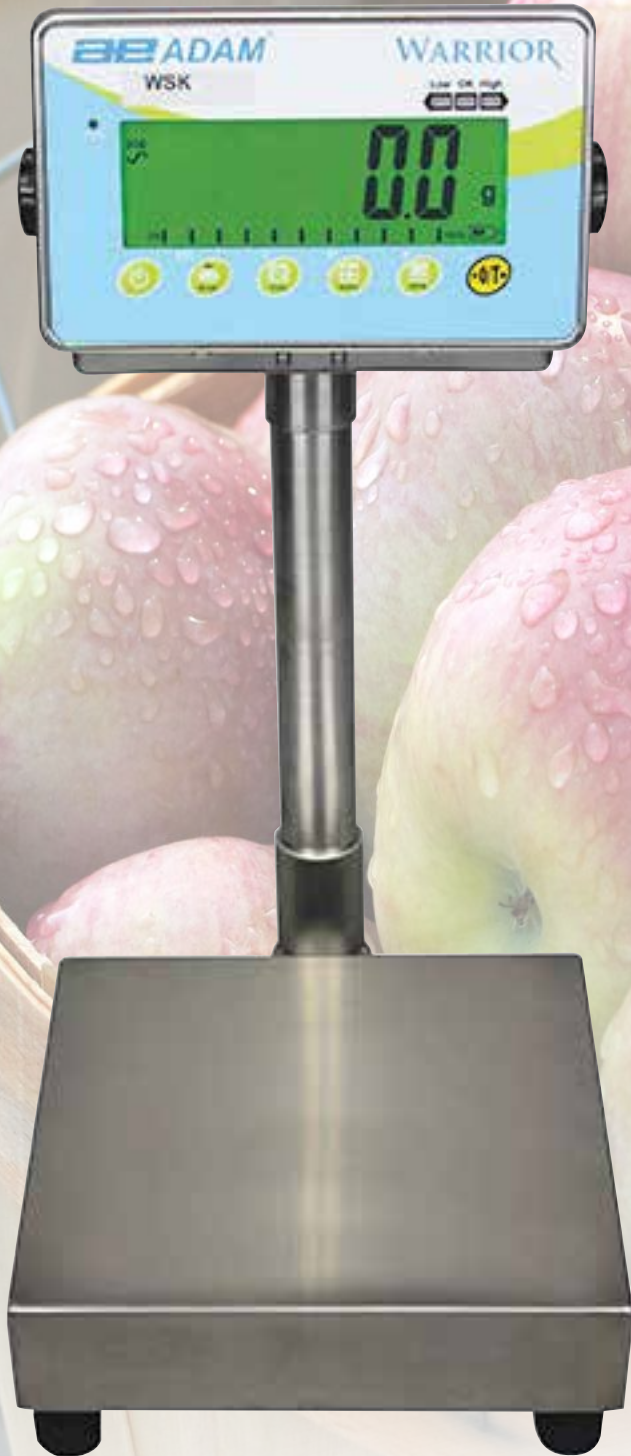
- Net Weight - 12.5kg, Overall Dim. - 400x620x860mm (wxdxh)

ACCESSORIES

Item number	Description
3052010526	In-use cover
1120011156	ATP thermal printer
3126011263	ATP thermal printer paper
3126011281	ATP thermal printer paper (pack of 10)
3074010266	RS-232 cable (Null Modem)
3074010507	RS-232 to USB adapter (must order corresponding RS-232 cable)
600002028	Adam DU data collection program
700660290	Calibration certificate



WASHDOWN SCALES

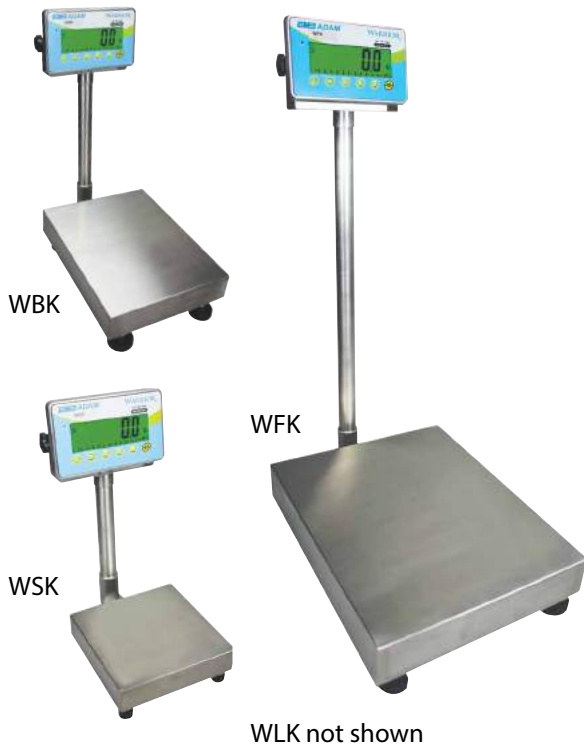


Featured Product: **Warrior® Washdown Scale**

The Warrior is well-suited for food processing or production, making it ideal for washdown applications. Its grade 304 stainless steel base, top pan, pillar and indicator are IP66 rated, so the Warrior can be thoroughly washed during or after use. The oversized display is brightly illuminated and easy to read in any lighting conditions.

Designed for applications needing frequent washdown, WBW and WBW-M scales are available in a selection of capacities and readabilities. IP66-rated housing and stainless steel pan stand up to demanding industrial environments. Other features include checkweighing LED indicators, capacity tracker and overload indicator to protect against damage from excessive weight.

WARRIOR® WASHDOWN SCALES



FEATURES

- Vivid, backlit LCD easily visible in any lighting conditions
- Programmable backlight can be set to “always on,” “always off” or “light only when weighing”
- Capacity tracker built into display for easily monitoring possible overloads
- Checkweighing LEDs light to clearly show under, over and acceptable limits
- Colour-coded keys facilitate quick recognition of the most frequently used buttons
- Heavy-duty rubber feet ensure stability of unit
- Large, grade 304 stainless steel pan allows easy cleaning
- Overload protection helps prevent damage to internal components
- Rugged stainless steel construction for ultimate durability
- Sealed keypad protects against dirt and spills
- Simple key operation allows for easy set up and operation
- Checkweighing with audible alarm
- External calibration allows for verification and adjustment with weights
- Parts counting with preset sample sizes
- Selectable digital filtering for animal/dynamic weighing delivers stable results for moving subjects
- Selectable auto-clear function enables the last item to be reset each time the scale returns to zero
- Zero-tracking feature ensures display returns to zero reading
- IP66 rated for protection against water and dust
- Rechargeable battery included for operation almost anywhere
- Programmable auto power-off to save energy
- AC adapter included

With strength, performance and intuitive features, the Warrior emerges victorious in washdown settings

GENERAL SPECIFICATIONS

- Weighing units: g, kg, lb, lb:oz, oz, N
- Interface: RS-232
- Power Supply: 12VDC 50/60Hz 800mA adapter / Internal rechargeable battery
- Display: Backlit LCD with 40mm-high digits
- Calibration: External calibration
- Housing: Stainless steel
- Operating Temperature: -10° to 40°C

APPLICATIONS

- Weighing
- Parts counting
- Percentage weighing
- Checkweighing
- Dynamic / animal weighing

Model	Capacity	Readability	Pan Size
WSK 8	8kg	0.5g	250x250mm
WSK 16	16kg	1g	250x250mm
WSK 32	32kg	2g	250x250mm
WBK 32	32kg	2g	300x400mm
WBK 32H	32kg	1g	300x400mm
WBK 75	75kg	5g	300x400mm
WFK 75	75kg	5g	400x500mm
WFK 75H	75kg	1g	400x500mm
WFK 150	150kg	10g	400x500mm
WLK 150	150kg	10g	450x600mm



WEIGHT AND DIMENSIONS

- **WSK 8, WSK 16, WSK 32:** Net Weight - 6kg, Overall Dim. - 250x345x532mm (wxdxh)
- **WBK 32, WBK 32H, WBK 75:** Net Weight - 9kg, Overall Dim. - 300x500x587mm (wxdxh)
- **WFK 75, WFK 75H, WFK 150:** Net Weight - 13kg, Overall Dim. - 400x590x972mm (wxdxh)
- **WLK 150:** Net Weight - 19kg, Overall Dim. - 450x700x972mm (wxdxh)

ACCESSORIES

Item number	Description
3102311619	In-use cover
1120011156	ATP thermal printer
3126011263	ATP thermal printer paper
3126011281	ATP thermal printer paper (pack of 10)
3134012936	RS-232 Cable to 9pin D connector 1.5m (factory fitted)
3134012941	RS-232 Cable to ATP Printer 1.5m (factory fitted)
1100011297	AE402 relay box
600002028	Adam DU data collection program
700660290	Calibration certificate



1120011156



600002028



1100011297



FEATURES

- Vivid, backlit LCD easily visible in any lighting conditions
- Programmable backlight can be set to "always on," "always off" or "light only when weighing"
- Capacity tracker built into display for easily monitoring possible overloads
- Checkweighing LEDs light to clearly show under, over and acceptable limits
- Adjustable levelling feet help optimise setup
- Colour-coded keys facilitate quick recognition of the most frequently used buttons
- Large, grade 304 stainless steel pan allows easy cleaning
- Lightweight design simplifies transport and portability
- Solid ABS housing is durable for industrial uses
- Overload protection helps prevent damage to internal components
- Audible overload alarm warns when capacity has been exceeded
- External calibration allows for verification and adjustment with weights
- Simple operation allows quick startup and use with little or no training
- Zero-tracking feature ensures display returns to zero reading
- IP66 rated for protection against water and dust
- Rechargeable battery included for operation almost anywhere
- Programmable auto power-off to save energy
- AC adapter included

Checkweighing is a breeze with the WBW's colour indicators

GENERAL SPECIFICATIONS

- Weighing units: g, kg, lb, lb:oz
- Power Supply: 12VDC 50/60Hz 800mA adapter / Internal rechargeable battery
- Display: Backlit LCD with 20mm-high digits
- Calibration: External calibration
- Housing: ABS plastic / Stainless Steel Top Pan
- Operating Temperature: -10° to 40°C

Model	Capacity	Readability	Pan Size
WBW 2	2kg	0.2g	210x173mm
WBW 4	4kg	0.5g	210x173mm
WBW 8	8kg	1g	210x173mm
WBW 16	16kg	2g	210x173mm

APPLICATIONS

- Weighing
- Checkweighing

WEIGHT AND DIMENSIONS

- Net Weight - 3.3kg, Overall Dim. - 231x265x153mm (wxdxh)

Approved Models EC Type Approved

Model	Capacity	Readability	Pan Size
WBW 1.5M	1.5kg	0.5g	210x173mm
WBW 3M	3kg	1g	210x173mm
WBW 6M	6kg	2g	210x173mm
WBW 15M	15kg	5g	210x173mm



ACCESSORIES

Item number	Description
2020010755	Rear Display (factory fitted)
303209190	In-use cover
303200002	In-use cover (pack of 10)
303200003	In-use cover (pack of 20)
303147960	Small scoop (complete with fitting to scales)
303147961	Medium scoop (complete with fitting to scales)
303147959	Large scoop (complete with fitting to scales)
700660290	Calibration certificate



303147959 / 303147960 / 3031479601



A smart choice for catering, delis and bakeries that sell food based on weight, the WBZ washdown retail scale simplifies price computing. Weight, price per unit and total cost are visible to both operator and customer on WBZ's dual display. Easy to maintain, the WBZ has a streamlined design and fits neatly on crowded counters. It carries an IP66 rating and features NRCS and EC type approvals, making it suitable for trade use.

The AZextra retail scale offers weighing and price computing functions needed for meat counters, shops and markets. AZextra comes with internal memory capable of storing up to 103 product look-ups; the display shows price per kilogram or price per 100 grams. Time, date, weight, unit price and total cost transmit easily to printers. National Measurement Institute, NRCS and EC type approval means the AZextra can be used for trade.

Simple to use, Raven price computing scales offer 40 PLU memories that can be accessed directly from the keypad for quick recall of products. Large backlit displays on both the front and back of the scale, clearly show both the operator and customer the weight, unit price and total price. A customer-facing, pillar-mounted display can be added for additional visibility. The built-in, rechargeable battery makes the Raven ideal for applications such as selling at farmer's markets, where portability is a must.

The CCEU coin counting scale handles a large number of coins, providing accurate counts for nine different coins and two different token weights. The memory accumulates figures to show a total amount. Easy-to-use colour-coded keys speed up operation, while the large stainless steel platform accommodates a range of container sizes.



**Featured Product:
WBZ Retail Scale**

FEATURES

- Vivid, backlit LCD easily visible in any lighting conditions
- Backlit LCD shows weight, unit price and total price, to provide the key information simultaneously
- Rear display mounted on the back of the scale lets customers see key data
- Colour-coded keys facilitate quick recognition of the most frequently used buttons
- Heavy-duty rubber feet ensure stability of unit
- Large, grade 304 stainless steel pan allows easy cleaning
- Overload protection helps prevent damage to internal components
- Sealed keypad protects against dirt and accidental spills
- Solid ABS housing is durable for industrial uses
- External calibration allows for verification and adjustment with weights
- Preset tare function speeds the process of repetitive weighing
- Price displayed in choice of available currencies
- Security password control prevents unauthorised access
- Selectable auto-clear function enables the last item to be reset each time the scale returns to zero
- Zero-tracking feature ensures display returns to zero reading
- IP66 rated for protection against water and dust
- AC adapter included
- Rechargeable battery included for operation almost anywhere
- Programmable auto power-off to save energy



Portable and durable IP66-rated scale is a winner for price computing in retail locations

GENERAL SPECIFICATIONS

- Weighing units: kg
- Power Supply: 12VDC 50/60Hz 800mA adapter / Internal rechargeable battery
- Display: Backlit LCD with 16mm-high digits
- Calibration: External calibration
- Housing: ABS plastic / Stainless Steel Top Pan
- Operating Temperature: -10° to 40°C

Model	Capacity	Readability	Pan Size
WBZ 3	3kg	1g	210x173mm
WBZ 6	6kg	2g	210x173mm
WBZ 15	15kg	5g	210x173mm



APPLICATIONS

- Weighing
- Price computing

WEIGHT AND DIMENSIONS

- Net Weight - 3.3kg, Overall Dim. - 231x265x153mm (wxdxh)

ACCESSORIES

Item number	Description
303209190	In-use cover
303200002	In-use cover (pack of 10)
303200003	In-use cover (pack of 20)
303149761	Fish Scoop (complete with fitting to scale)
303149759	Vegetable Scoop (complete with fitting to scale)
303149760	Confectionery Scoop (complete with fitting to scale)
700660290	Calibration certificate



303147959 / 303147960 / 3031479601

AZEXTRA PRICE-COMPUTING RETAIL SCALES



FEATURES

- Backlit LCD shows weight, unit price and total price, to provide the key information simultaneously
- Rear display mounted on a pillar or back of the scale lets customers see key data
- Adjustable levelling feet help optimise setup
- Colour-coded keys facilitate quick recognition of the most frequently used buttons
- Large, grade 304 stainless steel pan allows easy cleaning
- Lightweight design simplifies transport and portability
- RS-232 interface for connection to computers and printers
- Solid ABS housing is durable for industrial uses
- Audible overload alarm warns when capacity has been exceeded
- External calibration allows for verification and adjustment with weights
- Memory accumulation totals results
- Preset tare function speeds the process of repetitive weighing
- 130 Product Look Up (PLU) memory locations store a range of items for recall as needed
- Selectable auto-clear function enables the last item to be reset each time the scale returns to zero
- Zero-tracking feature ensures display returns to zero reading
- EC type approved
- Rechargeable battery included for operation almost anywhere
- Programmable auto power-off to save energy

Front and rear displays provide simultaneous customer and operator viewing

GENERAL SPECIFICATIONS

- Weighing units: kg
- Interface: RS-232
- Power Supply: Mains power cord / Internal rechargeable battery
- Display: Backlit LCD with 20mm-high digits
- Calibration: External calibration
- Housing: ABS plastic / Stainless Steel Top Pan
- Operating Temperature: -10° to 40°C

APPLICATIONS

- Weighing
- Price computing

Model	Capacity	Readability	Pan Size
AZextra 3	3kg	1g	225x275mm
AZextra 6	6kg	2g	225x275mm
AZextra 15	15kg	5g	225x275mm
AZextra 30	30kg	10g	225x275mm
AZextra 3P	3kg	1g	225x275mm
AZextra 6P	6kg	2g	225x275mm
AZextra 15P	15kg	5g	225x275mm
AZextra 30P	30kg	10g	225x275mm

P Models include pillar



WEIGHT AND DIMENSIONS

- **AZextra 3, AZextra 6, AZextra 15, AZextra 30:** Net Weight - 4.3kg, Overall Dim. - 315x355x110mm (wxdxh)
- **AZextra 3P, AZextra 6P, AZextra 15P, AZextra 30P:** Net Weight - 4.7kg, Overall Dim. - 315x355x535mm (wxdxh)

ACCESSORIES

Item number	Description
302000001	Hard carrying case with lock
302205006	In-use cover
700200057	In-use cover (pack of 5)
700200058	In-use cover (pack of 10)
112001156	ATP thermal printer
3126011263	ATP thermal printer paper
3126011281	ATP thermal printer paper (pack of 10)
3074010266	RS-232 cable (Null Modem)
3074010507	RS-232 to USB adapter (must order corresponding RS-232 cable)
303149761	Fish Scoop (complete with fitting to scale)
303149759	Vegetable Scoop (complete with fitting to scale)
303149760	Confectionery Scoop (complete with fitting to scale)
600002028	Adam DU data collection program
700660290	Calibration certificate



112001156



303149759 / 303149760 / 3031497601



FEATURES

- Backlit LCD shows weight, unit price and total price, to provide the key information simultaneously
- Rear display mounted on the back of the scale lets customers see key data
- Adjustable levelling feet help optimise setup
- Colour-coded keys facilitate quick recognition of the most frequently used buttons
- Lightweight design simplifies transport and portability
- Large, grade 304 stainless steel pan allows easy cleaning
- Overload protection helps prevent damage to internal components
- Solid ABS housing is durable for industrial uses
- 40 Product Look Up (PLU) memory locations store a range of items for recall as needed
- Quick and easy configuration using the keypad
- The auto power-off feature conserves battery life
- Auto-clear function
- Preset tare function speeds the process of repetitive weighing
- EC type and OIML approved
- AC adapter included
- Programmable auto power-off to save energy
- Rechargeable battery included for operation almost anywhere

Raven offers price computing and weighing functions, in a small footprint scale

GENERAL SPECIFICATIONS

- Weighing units: kg
- Power Supply: 12VDC 50/60Hz 1A adapter / Internal rechargeable battery
- Display: Backlit LCD with 18mm-high digits
- Calibration: External calibration
- Housing: ABS plastic / stainless steel top pan
- Operating Temperature: -10° to 40°C

Model	Capacity	Readability	Pan Size
RAV 3D	1.5kg / 3kg	0.5g / 1g	220x310mm
RAV 6D	3kg / 6kg	1g / 2g	220x310mm
RAV 15D	6kg / 15kg	2g / 5g	220x310mm
RAV 30D	15kg / 30kg	5g / 10g	220x310mm



APPLICATIONS

- Weighing
- Price computing

WEIGHT AND DIMENSIONS

- Net Weight - 3.85kg, Overall Dim. - 330x335x115mm (wxdxh)



Rear View

ACCESSORIES

Item number	Description
303149761	Fish Scoop (complete with fitting to scale)
303149759	Vegetable Scoop (complete with fitting to scale)
303149760	Confectionery Scoop (complete with fitting to scale)
700660290	Calibration certificate



303147959 / 303147960 / 3031479601



FEATURES

- Vivid, backlit LCD easily visible in any lighting conditions
- Security password control
- Memory accumulation totals coin values
- Accommodates nine different coin units and two different token sizes
- Adjustable levelling feet help optimise setup
- Colour-coded keys facilitate quick recognition of the most frequently used buttons
- Large, grade 304 stainless steel pan allows easy cleaning
- Lightweight design simplifies transport and portability
- RS-232 interface for connection to computers and printers
- Audible overload alarm warns when capacity has been exceeded
- External calibration allows for verification and adjustment with weights
- Zero-tracking feature ensures display returns to zero reading
- Rechargeable battery included for operation almost anywhere
- Programmable auto power-off to save energy
- Counts Euros or sterling coins, but can be configured for other currencies as well

Dependable and efficient coin counting, providing quality assurance

GENERAL SPECIFICATIONS

- Weighing units: kg, PCS
- Interface: RS-232, Optional USB
- Power Supply: Mains power cord / Internal rechargeable battery
- Display: Backlit LCD with 20mm-high digits
- Calibration: External calibration
- Housing: ABS plastic / Stainless Steel Top Pan
- Operating Temperature: 0° to 40°C

Model	Capacity	Readability	Pan Size
CCEU 20	20kg	1g	225x275mm



APPLICATIONS

- Coin counting
- Weighing

WEIGHT AND DIMENSIONS

- Net Weight - 4.4kg, Overall Dim. - 315x355x110mm (wxdxh)

ACCESSORIES

Item number	Description
302000001	Hard carrying case with lock
302205006	In-use cover
700200057	In-use cover (pack of 5)
700200058	In-use cover (pack of 10)
1120011156	ATP thermal printer
3126011263	ATP thermal printer paper
3126011281	ATP thermal printer paper (pack of 10)
3074010266	RS-232 cable (Null Modem)
3074010507	RS-232 to USB adapter (must order corresponding RS-232 cable)
700660290	Calibration certificate



302000001



3074010266



1120011156

CRANE SCALES



Adam's industrial hanging scales provide manufacturing operations with a solution to safely measure suspended loads. IHS features robust die-cast metal housing and a rotating plated steel hook with oversized shackle to help manoeuvre loads indoors or outdoors up to 10,000kg. The remote control enables operation from a safe location, and the LED is highly visible from a distance. A hold / peak hold function keeps the results on the display for easier operation.

Adam's industrial hanging scales provide manufacturing operations with a solution to safely measure suspended loads. LHS features cast aluminum magnesium housing and a rotating chrome-plated steel hook and swivel shackle to help the operator easily manoeuvre loads up to 2,000kg. The remote control enables operation from a safe location, and the LED is highly visible from a distance. A hold / peak hold function keeps the results on the display for easier operation.

Adam's industrial hanging scales provide manufacturing operations with a solution to safely measure suspended loads. SHS features sturdy polycarbonate housing and a rotating chrome-plated steel hook and swivel shackle to help the operator easily manoeuvre loads up to 300kg. The remote control enables operation from a safe location, and the LED is highly visible from a distance. A hold / peak hold function keeps the results on the display for easier operation.

Featured Product:
LHS Crane Scale



FEATURES

- Bright LED display for easy viewing in most environments
- Rotating hook allows easy access while loading, then safely locks in place during weighing
- Lightweight design simplifies transport and portability
- Rugged construction stands up to industrial use
- Remote control allows safe, hands-free operation
- External calibration allows for verification and adjustment with weights
- Hold function freezes the displayed weight, allowing time to lapse without losing the result
- Zero-tracking feature ensures display returns to zero reading
- Programmable auto power-off to save energy

Bringing strength and safety to the forefront of industrial settings

GENERAL SPECIFICATIONS

- Weighing units: kg, lb, N
- Power Supply: AC adapter / 4 x AA batteries / Internal rechargeable battery
- Display: LED with 15mm-high digits
- Calibration: External calibration
- Housing: Polycarbonate
- Operating Temperature: 0° to 40°C

Model	Capacity	Readability
SHS 50	50kg	0.01kg
SHS 150	150kg	0.02kg
SHS 300	300kg	0.05kg



APPLICATIONS

- Weighing

WEIGHT AND DIMENSIONS

- Net Weight - 1.2kg, Overall Dim. - 146x65x320mm (wxdxh)

Adam Equipment Co. Ltd., its directors, staff, owners and affiliated companies and organisations cannot be held liable for any resulting damage or injury sustained as a result of the machines being used in excess of their capacities and ultimate overload limits.

ACCESSORIES

Item number	Description
700660290	Calibration certificate



FEATURES

- Bright LED display for easy viewing in most environments
- Rotating hook allows easy access while loading, then safely locks in place during weighing
- Lightweight design simplifies transport and portability
- Remote control allows safe, hands-free operation
- Rugged construction stands up to industrial use
- External calibration allows for verification and adjustment with weights
- Hold function freezes the displayed weight, allowing time to lapse without losing the result
- Zero-tracking feature ensures display returns to zero reading
- Programmable auto power-off to save energy

Suitable for weighing moderate loads, LHS delivers durability in a hanging scale

GENERAL SPECIFICATIONS

- Weighing units: kg, lb, N
- Power Supply: AC adapter / Internal rechargeable battery
- Display: LED with 25mm-high digits
- Calibration: External calibration
- Housing: Die-cast aluminum
- Operating Temperature: 0° to 40°C

Model	Capacity	Readability
LHS 500	500kg	0.1kg
LHS 1500	1500kg	0.2kg
LHS 2000	2000kg	0.5kg



APPLICATIONS

- Weighing

WEIGHT AND DIMENSIONS

- Net Weight - 4.8kg, Overall Dim. - 195x130x450mm (wxdxh)

Adam Equipment Co. Ltd., its directors, staff, owners and affiliated companies and organisations cannot be held liable for any resulting damage or injury sustained as a result of the machines being used in excess of their capacities and ultimate overload limits.

ACCESSORIES

Item number	Description
700660288	Calibration certificate



FEATURES

- Bright LED display for easy viewing in most environments
- Rotating hook allows easy access while loading, then safely locks in place during weighing
- Remote control allows safe, hands-free operation
- Sealed keypad protects against dirt and accidental spills
- Solid metal housing resists spills and protects internal components
- Auto power-off to save energy
- Rechargeable battery included for operation almost anywhere
- AC adapter included

When strength and safety are essential, IHS is the overwhelming winner to weigh suspended loads

GENERAL SPECIFICATIONS

- Weighing units: kg
- Power Supply: 7.2VDC 50/60Hz 2A adapter / Internal rechargeable battery
- Display: LED with 30mm-high digits
- Calibration: External calibration
- Housing: Die-cast aluminum
- Operating Temperature: 0° to 40°C

Model	Capacity	Readability
IHS 1	1000kg	0.2kg
IHS 3	3000kg	0.5kg
IHS 5	5000kg	1kg
IHS 10	10000kg	2kg



APPLICATIONS

- Weighing

WEIGHT AND DIMENSIONS

- IHS 1: Net Weight - 12kg, Overall Dim. - 255x190x550mm (wxdxh)
- IHS 3: Net Weight - 14kg, Overall Dim. - 255x190x550mm (wxdxh)
- IHS 5: Net Weight - 19kg, Overall Dim. - 255x190x650mm (wxdxh)
- IHS 10: Net Weight - 31kg, Overall Dim. - 255x190x750mm (wxdxh)

Adam Equipment Co. Ltd., its directors, staff, owners and affiliated companies and organisations cannot be held liable for any resulting damage or injury sustained as a result of the machines being used in excess of their capacities and ultimate overload limits.

ACCESSORIES

Item number	Description
700660288	Calibration certificate

HEAVY DUTY SCALES



Featured Product: **PTS Pallet Scale**

AELP pallet beams are ideal for weighing pallets and other oversized items. The AELP is simple to operate and easy to move, with built-in wheels and handles for mobility. Pair the AELP with the GK indicator for a range of different features. The AELP is equipped with five meters of shielded cable, allowing the indicator and beams to be ideally positioned.

The PTM low-profile platform is ideal for weighing barrels, wheelchairs, drums and other oversized containers. Easy-access ramps on both sides offer smooth transitions from the floor to the weighing platform and the diamond checkered-plate surface offers a steady, solid weighing area. Handles and wheels allow the PTM to be moved easily.

Compatible with several Adam indicators, PT platform is designed for weighing pallets, crates and large containers in warehouses or on loading docks. PT features a low-profile design for easy access and a diamond-plate surface for better traction, while optional ramps facilitate loading and unloading. PT is available in several models, including a stainless steel version.

The PTS offers an easy and cost-efficient way to manage, move and weigh heavy loads. Reinforced steel pallet forks are generously sized and provide durable lifting capabilities. A zero-radius pivoting handle provides exceptional maneuverability in tight spots, while non-marring polyurethane wheels ensure floors stay clean and unmarked.



FEATURES

- Low-profile beams allow easy pallet weighing using pallet trucks
- Approximately five meter of shielded cable
- Heavy-duty rubber feet ensure stability of unit
- Integrated wheels permit easy movement
- Can be used with one of several Adam indicators
- Two beams per set
- AELP1000, AELP2000, AELP3000 are beams only
- AELP1000(GK), AELP2000(GK), AELP3000(GK) are beams and indicators
- OIML-approved load cells

Low-profile beams facilitate safe, secure weighing for loaded pallets

GENERAL SPECIFICATIONS

- Housing: Mild steel base
- Operating Temperature: -10° to 40°C

Model	Capacity	Readability	Pan Size
AELP 1000	1000kg	0.2kg	120x1330mm
AELP 2000	2000kg	0.5kg	120x1330mm
AELP 3000	3000kg	1kg	120x1330mm

APPLICATIONS

- Weighing
- Parts counting
- Percentage weighing
- Checkweighing
- Check counting
- Dynamic / animal weighing



GK Indicator
Page 48

Models with GK indicator

Model	Capacity	Readability	Pan Size
AELP 1000 [GK]	1000kg	0.2kg	120x1330mm
AELP 2000 [GK]	2000kg	0.5kg	120x1330mm
AELP 3000 [GK]	3000kg	1kg	120x1330mm



WEIGHT AND DIMENSIONS (Beams only)

- Net Weight - 34kg, Overall Dim. - 120x1330x85mm (wxdxh)

ACCESSORIES

Item number	Description
700400103	RS-232 cable
3052010526	In-use cover
1120011156	ATP thermal printer
3126011263	ATP thermal printer paper
3126011281	ATP thermal printer paper (pack of 10)
3074010266	RS-232 cable (Null Modem)
3074010507	RS-232 to USB adapter (must order corresponding RS-232 cable)
600002028	Adam DU data collection program
2050013351	Indicator stand
700660289	Calibration certificate

FEATURES

- Adjustable levelling feet help optimise setup
- Built-in ramps on each side enable easy access
- Chequered plate surface for added grip
- Heavy-duty rubber feet ensure stability of unit
- Integrated wheels permit easy movement
- Three-meter load cell cable
- Rugged construction stands up to industrial use
- PTM500 is base only
- PTM500(GK) is base and indicators



Low-profile base and easy-access ramps for warehouses or medical use

GENERAL SPECIFICATIONS

- Housing: Mild steel base
- Operating Temperature: -10° to 40°C

Model	Capacity	Readability	Pan Size
PTM 500	500kg	0.1kg	760x580mm
PTM 500 [GK]	500kg	0.1kg	760x580mm



APPLICATIONS

- Weighing
- Parts counting
- Percentage weighing
- Checkweighing
- Dynamic / animal weighing

WEIGHT AND DIMENSIONS (PTM500 only)

- Net Weight - 35.5kg, Overall Dim. - 1020x803x75mm (wxdxh)



GK Indicator
Page 48

ACCESSORIES

Item number	Description
700400103	RS-232 cable
1120011156	ATP thermal printer
3126011263	ATP thermal printer paper
3126011281	ATP thermal printer paper (pack of 10)
3074010266	RS-232 cable (Null Modem)
3074010507	RS-232 to USB adapter (must order corresponding RS-232 cable)
600002028	Adam DU data collection program
2050013351	Indicator stand
700660288	Calibration certificate



FEATURES

- Rugged construction stands up to industrial use
- Chequered plate surface for added grip
- Approximately three meter shielded cable
- Optional ramps facilitate loading and unloading
- Can be used with one of several Adam indicators

Quality construction with diamond-plate surface for ultimate durability and performance

GENERAL SPECIFICATIONS

- Housing: Mild steel base
- Operating Temperature: -10° to 40°C

APPLICATIONS

- Weighing
- Parts counting
- Checkweighing
- Dynamic / animal weighing

WEIGHT AND DIMENSIONS

- **PT 110, PT 310:** Net Weight - 62kg, Overall Dim.- 1000x1000x110mm (wxdxh)
- **PT 112, PT 312:** Net Weight - 79kg, Overall Dim.- 1200x1200x110mm (wxdxh)
- **PT 115, PT 315:** Net Weight - 111kg, Overall Dim.- 1500x1500x110mm (wxdxh)



GK Indicator
Page 48



GK M Indicator
Page 48

Model	Capacity	Readability	Pan Size
PT 110	1000kg	0.2kg	1000x1000mm
PT 112	1000kg	0.2kg	1200x1200mm
PT 115	1000kg	0.2kg	1500x1500mm
PT 310	3000kg	0.5kg	1000x1000mm
PT 312	3000kg	0.5kg	1200x1200mm
PT 315	3000kg	0.5kg	1500x1500mm

Models with GK indicator

Model	Capacity	Readability	Pan Size
PT 110 [GK]	1000kg	0.2kg	1000x1000mm
PT 112 [GK]	1000kg	0.2kg	1200x1200mm
PT 115 [GK]	1000kg	0.2kg	1500x1500mm
PT 310 [GK]	3000kg	0.5kg	1000x1000mm
PT 312 [GK]	3000kg	0.5kg	1200x1200mm
PT 315 [GK]	3000kg	0.5kg	1500x1500mm

Approved Models EC Type Approved*

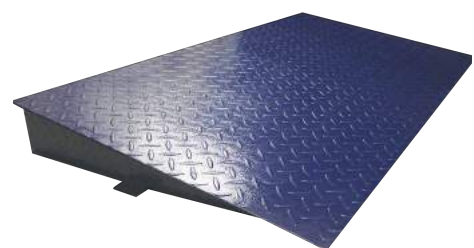
Model	Capacity	Readability	Pan Size
PT 110 [GK M]	1500kg	0.5kg	1000x1000mm
PT 112 [GK M]	1500kg	0.5kg	1200x1200mm
PT 115 [GK M]	1500kg	0.5kg	1500x1500mm
PT 310 [GK M]	3000kg	1kg	1000x1000mm
PT 312 [GK M]	3000kg	1kg	1200x1200mm
PT 315 [GK M]	3000kg	1kg	1500x1500mm

*Verification fees for Approved PT models with GK-M available on application.



ACCESSORIES

Item number	Description
3052010526	In-use cover
1120011156	ATP thermal printer
3126011263	ATP thermal printer paper
3126011281	ATP thermal printer paper (pack of 10)
3074010266	RS-232 cable (Null Modem)
3074010507	RS-232 to USB adapter (must order corresponding RS-232 cable)
700100200	Mild Steel Ramp - PT 12R 1200mm wide
700100201	Mild Steel Ramp - PT 15R 1500mm wide
700100199	Mild Steel Ramp - PT 10R 1000mm wide
2050013351	Indicator stand
700660289	Calibration certificate



700100200



FEATURES

- Vivid, backlit LCD easily visible in any lighting conditions
- Programmable backlight can be set to “always on,” “always off” or “light only when weighing”
- Capacity tracker built into display for easily monitoring possible overloads
- Checkweighing LEDs light to clearly show under, over and acceptable limits
- Solid non-marring polyurethane wheels
- Colour-coded keys facilitate quick recognition of the most frequently used buttons
- RS-232 interface for connection to computers and printers
- Splash-proof housing, keypad and display mean easy cleaning
- Wheels swivel, allowing easy movement
- Audible overload alarm warns when capacity has been exceeded
- Checkweighing with audible alarm
- External calibration allows for verification and adjustment with weights
- Parts counting with preset sample sizes
- Auto-clear function enables the last item to be reset each time the scale returns to zero
- Selectable digital filtering for animal/dynamic weighing delivers stable results for moving subjects
- Zero-tracking feature ensures display returns to zero reading
- Rechargeable battery included for operation almost anywhere
- Programmable auto power-off to save energy
- AC adapter included

Speed up warehouse operations and reduce transportation overcharges with the PTS

GENERAL SPECIFICATIONS

- Weighing units: kg, lb, lb:oz, oz, N
- Interface: RS-232
- Power Supply: 12VDC 50/60Hz 800mA adapter / Internal rechargeable battery
- Display: Backlit LCD with 40mm-high digits
- Calibration: External calibration
- Housing: Mild steel base
- Operating Temperature: -10° to 40°C

Model	Capacity	Readability	Pan Size
PTS 2000	2000kg	0.5kg	160x1150mm



APPLICATIONS

- Weighing
- Parts counting
- Percentage weighing
- Checkweighing
- Dynamic / animal weighing

WEIGHT AND DIMENSIONS

- Net Weight - 125kg, Overall Dim. - 550x1525x1175mm (wxdxh)

ACCESSORIES

Item number	Description
700400103	RS-232 cable
3102311619	In-use cover
1120011156	ATP thermal printer
3126011263	ATP thermal printer paper
3126011281	ATP thermal printer paper (pack of 10)
3074010507	RS-232 to USB adapter (must order corresponding RS-232 cable)
600002028	Adam DU data collection program
700660289	Calibration certificate



Featured Product:
AE402 Indicator

The AE402 boasts washdown capabilities and is well-suited for food processing plants or shipping and receiving areas. The sealed stainless steel housing is IP66 rated, so it can be hosed down or pressure-washed after use. A large LCD offers 40mm-high digits that are easily viewed under any lighting conditions, reducing user error.

The GK provides a full numeric keypad, allowing users to preset tare values for repetitive weighing of identical containers. A capacity tracker shows how much weighing range remains. Coloured LEDs speed up checkweighing, indicating if the weight is over, under or within a specified range.

With a wide range of features, the GC is ideal for parts counting tasks. Its numeric keypad facilitates unit weight and sample entry, while a large backlit display shows unit weight, total weight and number of pieces. The GC accumulates count totals and alerts the user when a predetermined count is reached.

AE 402 INDICATOR



FEATURES

- Vivid, backlit LCD easily visible in any lighting conditions
- Capacity tracker built into display for easily monitoring possible overloads
- Colour-coded keys facilitate quick recognition of the most frequently used buttons
- Robust metal housing protects internal components in harsh environments
- Rugged construction stands up to industrial use
- RS-232 interface for connection to computers and printers
- Wall-mount bracket for placing indicator on vertical surface
- Checkweighing with audible alarm
- External calibration allows for verification and adjustment with weights
- Hold function freezes the displayed weight, allowing time to lapse without losing the result
- Parts counting with preset sample sizes
- Quick and easy configuration using the keypad
- Selectable digital filtering for animal/dynamic weighing delivers stable results for moving subjects
- User-selectable scale division
- Zero-tracking feature ensures display returns to zero reading
- IP66-rated for protection against water and dust
- AC adapter included
- Rechargeable battery included for operation almost anywhere
- Programmable auto power-off to save energy

Multi-function washdown indicator for demanding environments

GENERAL SPECIFICATIONS

- Weighing units: g, kg, lb, lb:oz, oz, N
- Interface: RS-232
- Power Supply: 12VDC 50/60Hz 800mA adapter / Internal rechargeable battery
- Display: Backlit LCD with 40mm-high digits
- Calibration: External calibration
- Housing: Stainless steel
- Operating Temperature: 0° to 40°C

Model	Capacity Range	Resolution
AE 402	Selectable	1:80,000



APPLICATIONS

- Weighing
- Parts counting
- Percentage weighing
- Checkweighing
- Dynamic / animal weighing

WEIGHT AND DIMENSIONS

- AE 402: Net Weight - 2kg, Overall Dim. - 240x145x95mm (wxdxh)

ACCESSORIES

Item number	Description
700400103	RS-232 cable
3102311619	In-use cover
1120011156	ATP thermal printer
3126011263	ATP thermal printer paper
3126011281	ATP thermal printer paper (pack of 10)
3074010507	RS-232 to USB adapter (must order corresponding RS-232 cable)
1100011297	AE402 relay box
2050013351	Indicator stand
600002028	Adam DU data collection program



1120011156



1100011297



FEATURES

- Vivid, backlit LCD easily visible in any lighting conditions
- Programmable backlight can be set to “always on,” “always off” or “light only when weighing”
- Capacity tracker built into display for easily monitoring possible overloads
- Colour-coded keys facilitate quick recognition of the most frequently used buttons
- RS-232 interface for connection to computers and printers
- Solid ABS housing is durable for industrial uses
- Splash-proof housing, keypad and display mean easy cleaning and peace of mind
- Wall-mount bracket for placing indicator on vertical surface
- Checkweighing with audible alarm
- External calibration allows for verification and adjustment with weights
- Parts counting with freely selectable sample sizes
- Parts counting optimisation automatically refines piece weight as parts are added
- Preset tare function speeds the process of repetitive weighing
- Printouts include date and time for data tracking within Good Laboratory Practices (GLP) guidelines
- Programmable capacity and readability for a variety of applications
- Quick and easy configuration using the keypad
- Selectable digital filtering for animal/dynamic weighing delivers stable results for moving subjects
- Zero-tracking feature ensures display returns to zero reading
- Rechargeable battery included for operation almost anywhere
- Programmable auto power-off to save energy

Weighing and counting tasks accomplished with simple versatility

GENERAL SPECIFICATIONS

- Capacity: Selectable
- Weighing units: g, kg
- Interface: RS-232
- Power Supply: Mains power cord / Internal rechargeable battery
- Display: Backlit LCD with capacity tracker with 20mm-high digits
- Calibration: External calibration
- Housing: ABS plastic
- Operating Temperature: -10° to 40°C

Model	Capacity Range	Resolution
GK	Selectable	1:80,000

Approved Models EC Type Approved

Model	Capacity Range	Resolution
GK M	Selectable	1:3,000



APPLICATIONS

- Weighing
- Parts counting
- Percentage weighing
- Checkweighing
- Check counting
- Dynamic / animal weighing

WEIGHT AND DIMENSIONS

- Net Weight - 2kg, Overall Dim. - 260x170x115mm (wxdxh)

ACCESSORIES

Item number	Description
3052010526	In-use cover
1120011156	ATP thermal printer
3126011263	ATP thermal printer paper
3126011281	ATP thermal printer paper (pack of 10)
3074010266	RS-232 cable (null-modem)
3074010507	RS-232 to USB adapter (must order corresponding RS-232 cable)
2050013351	Indicator stand
600002028	Adam DU data collection program



1120011156

FEATURES

- Backlit LCD shows weight, unit weight and count in one convenient location
- Colour-coded keys facilitate quick recognition of the most frequently used buttons
- Lightweight design simplifies transport and portability
- RS-232 interface for connection to computers and printers
- Solid ABS housing is durable for industrial uses
- Wall-mount bracket for placing indicator on vertical surface
- Audible overload alarm warns when capacity has been exceeded
- Internal counting resolution 1:600,000 for precise results
- Parts counting with freely selectable sample sizes
- Parts counting optimisation automatically refines piece weight as parts are added
- Preset tare function speeds the process of repetitive weighing
- Printouts include date and time for data tracking within Good Laboratory Practices (GLP) guidelines
- Selectable digital filtering helps minimise effects of vibration and disturbances
- Zero-tracking feature ensures display returns to zero reading
- User can program alarm to sound when preset total is reached
- Rechargeable battery included for operation almost anywhere
- Programmable auto power-off to save energy



Fundamental weighing and counting in a multi-functional indicator

GENERAL SPECIFICATIONS

- Capacity: Selectable
- Weighing units: g, kg
- Interface: RS-232
- Power Supply: Power Cord / Internal rechargeable battery
- Display: Backlit LCD with 20mm-high digits
- Calibration: External calibration
- Housing: ABS plastic
- Operating Temperature: -10° to 40°C

Model	Capacity Range	Resolution
GC	Selectable	1:80,000



APPLICATIONS

- Weighing
- Parts counting
- Check counting

WEIGHT AND DIMENSIONS

- GC: Net Weight - 2kg, Overall Dim .- 260x170x115mm (wxdxh)

ACCESSORIES

Item number	Description
3052010526	In-use cover
1120011156	ATP thermal printer
3126011263	ATP thermal printer paper
3126011281	ATP thermal printer paper (pack of 10)
3074010266	RS-232 cable (null-modem)
3074010507	RS-232 to USB adapter (must order corresponding RS-232 cable)
2050013351	Indicator stand
600002028	Adam DU data collection program



1120011156

HEALTH AND FITNESS SCALES



Featured Product:
MDW Physician Scale

Rugged and affordable, MDW scales are ideal for healthcare or fitness facilities. All MDW scales feature adjustable height rods for precise readings. MDW 300L is digital and calculates BMI, with wheels for mobility. MDW 250L is digital with built-in battery. MDW 160M is mechanical with wheels and notched counter weight.

The elegant and durable MUW 300L ultrasonic scale calculates height, weight and BMI (body mass index). This scale simplifies data collection and outputs patient and physician identification information without breaching confidentiality. The backlit LCD shows height, weight and BMI on one screen, eliminating the need to scroll through readings.

The MCW 300L chair scale from Adam Equipment provides an affordable and practical solution to address the challenge of weighing patients with limited mobility. The MCW combines sturdy construction with functionality, minimizing the difficulty of lifting patients and eliminating the need to move heavy health scales. Weight is measured in kilograms or pounds and the MCW 300L can calculate body mass index (BMI).

MTB BABY AND TODDLER SCALE



FEATURES

- High-contrast display is easily visible from a distance
- Memory feature can recall the last weight taken, allowing the user to focus on the child
- Cradle can be removed to weigh toddlers on the non-slip rubber mat
- Ergonomic cradle provides comfortable support
- Lightweight design simplifies transport and portability
- Auto power-off to save energy
- External calibration allows for verification and adjustment with weights
- Simple operation allows quick startup and use with little or no training
- Operates with AC adapter (included) or batteries (not included)
- Ruler for measuring length of baby

Offering the flexibility to weigh newborns and toddlers on the same scale

GENERAL SPECIFICATIONS

- Weighing units: kg, lb, lb:oz
- Power Supply: 6VDC 500mA adapter / 4 x AA batteries
- Display: LCD with 29mm-high digits
- Calibration: External calibration
- Housing: ABS plastic
- Operating Temperature: 10° to 40°C

Model	Capacity	Readability	Pan Size
MTB 20	20kg	5g	285x560mm



APPLICATIONS

- Weighing

WEIGHT AND DIMENSIONS

- MTB 20: Net Weight - 3.2kg, Overall Dim. - 560x350x140mm (wxdxh)

ACCESSORIES

Item number	Description
700660290	Calibration certificate



MDW300L



MDW250L



MDW160M /
MDW200M

FEATURES

- BMI (body mass index) function available on the MDW 300L
- The MDW 300L offers RS-232 interface for fast communication with printers and computers
- MDW 250L and 300L feature a hold function to retain the weight on the display
- Use the MDW 250L and 300L with the included AC adapter or rechargeable battery
- Height measurements from 60cm to 212cm
- Anti-slip platform ensures safety stepping on and off the scale
- Integrated wheels permit easy movement (Wheels not available on MDW250L)
- Height rod facilitates measuring the height of children and adults while weighing
- Tare bar included with MDW200M only

Affordable, easy-to-operate scale measures height and weight

GENERAL SPECIFICATIONS

- Weighing units: kg, lb (L models only)
- Display: Graduated beam (M models only)
- Calibration: External calibration
- Operating Temperature: 5° to 40°C
- Power Supply: 15VDC 50/60Hz 500mA adapter / Internal rechargeable battery (L models only)
- Display: LED with 22mm-high digits (L models only)
- Interface: RS-232 (MDW300L only)

Model	Capacity	Readability	Pan Size
MDW 160M	160kg	0.1kg	375x275mm
MDW 200M	200kg	0.1kg	375x275mm
MDW 250L	250kg	0.1kg	375x275mm
MDW 300L	300kg	0.05kg	375x275mm



APPLICATIONS

- Weighing

WEIGHT AND DIMENSIONS

- **MDW 160M:** Net Weight - 15kg, Overall Dim. - 530x275x1485mm (wxdxh)
- **MDW 200M:** Net Weight - 15kg, Overall Dim. - 530x275x1485mm (wxdxh)
- **MDW 250L:** Net Weight - 15kg, Overall Dim. - 535x275x940mm (wxdxh)
- **MDW 300L:** Net Weight - 13kg, Overall Dim. - 570x275x1310mm (wxdxh)

ACCESSORIES for MDW300L only

Item number	Description
112001156	ATP thermal printer
3126011263	ATP thermal printer paper
3126011281	ATP thermal printer paper (pack of 10)
3014011014	RS-232 cable
3074010507	RS-232 to USB adapter (must order corresponding RS-232 cable)
600002028	Adam DU data collection program
700660290	Calibration certificate



FEATURES

- Vivid, backlit LCD easily visible in any lighting conditions
- Automatic height calculation using ultrasonic sensors for precision measurements
- Printout can include a patient and doctor ID, as well as BMI measurements
- Height reading can be switched from centimeters to inches
- Ultrasonic height measurements from 80cm-210cm
- Anti-slip platform ensures safety stepping on and off the scale
- Colour-coded keys facilitate quick recognition of the most frequently used buttons
- Integrated wheels permit easy movement
- RS-232 interface for connection to computers and printers
- BMI (body mass index) indicator
- External calibration allows for verification and adjustment with weights
- AC adapter included
- Rechargeable battery included for operation almost anywhere

Elegant ultrasonic scale effortlessly calculates height, weight and BMI

GENERAL SPECIFICATIONS

- Weighing units: kg, lb, lb:oz
- Interface: RS-232
- Power Supply: 12VDC 50/60Hz 800mA adapter / Internal rechargeable battery
- Display: Backlit LCD with 17mm-high digits
- Calibration: External calibration
- Housing: Mild steel base
- Operating Temperature: 0° to 40°C

Model	Capacity	Readability	Pan Size
MUW 300L	300kg	0.05kg	375x375mm



APPLICATIONS

- Weighing

WEIGHT AND DIMENSIONS

- Net Weight - 21.7kg, Overall Dim. - 375x600x2320mm (wxdxh)

ACCESSORIES

Item number	Description
1120011156	ATP thermal printer
3126011263	ATP thermal printer paper
3126011281	ATP thermal printer paper (pack of 10)
3014011014	RS-232 cable
3074010507	RS-232 to USB adapter (must order corresponding RS-232 cable)
600002028	Adam DU data collection program
700660290	Calibration certificate

FEATURES

- Bright LED display for easy viewing in most environments
- Colour-coded keys facilitate quick recognition of the most frequently used buttons
- Splash-proof housing, keypad and display mean easy cleaning and peace of mind
- Footrests and armrests pivot for easy patient accessibility
- Wheels swivel, allowing easy movement
- BMI (body mass index) indicator
- Zero-tracking feature ensures display returns to zero reading
- Rechargeable battery included for operation almost anywhere
- AC adapter included



Convenience and accessibility when weighing patients with limited mobility

GENERAL SPECIFICATIONS

- Weighing units: kg, lb
- Interface: RS-232
- Power Supply: 15VDC 50/60Hz 500mA adapter / Internal rechargeable battery
- Display: LED with 22mm-high digits
- Calibration: External calibration
- Operating Temperature: 5° to 40°C

Model	Capacity	Readability
MCW 300L	300kg	0.05kg



APPLICATIONS

- Weighing

WEIGHT AND DIMENSIONS

- Net Weight - 25kg, Overall Dim. - 675x875x950mm (wxdxh)

ACCESSORIES

Item number	Description
1120011156	ATP thermal printer
3126011263	ATP thermal printer paper
3126011281	ATP thermal printer paper (pack of 10)
3014011014	RS-232 cable
3074010507	RS-232 to USB adapter (must order corresponding RS-232 cable)
600002028	Adam DU data collection program
700660290	Calibration certificate

VETERINARY SCALES



Lightweight and portable, the MTB offers versatility for vets and other healthcare providers. The cleverly designed ergonomic cradle provides comfortable support for smaller animals, and removes easily to reveal a non-slip rubber mat. A memory feature retains the last weight taken, allowing focus to remain on the animal.

Adam Equipment's CPWplus L floor scale provides valuable features and various configurations to meet the demands of many doctors needs. With simple operation, rugged construction and an easy-to-clean stainless steel pan, the CPWplus offers exceptional value for veterinary offices.

Featured Product:
MTB Veterinary Scale



FEATURES

- High-contrast display is easily visible from a distance
- Memory feature can recall the last weight taken, allowing the user to focus on the animal
- Cradle can be removed to weigh toddlers on the non-slip rubber mat
- Ergonomic cradle provides comfortable support
- Lightweight design simplifies transport and portability
- Auto power-off to save energy
- External calibration allows for verification and adjustment with weights
- Simple operation allows quick startup and use with little or no training
- Operates with AC adapter (included) or batteries (not included)
- Ruler for measuring length

Offering the flexibility to weigh animals safely

GENERAL SPECIFICATIONS

- Weighing units: kg, lb, lb:oz
- Power Supply: 6VDC 500mA adapter / 4 x AA batteries
- Display: LCD with 29mm-high digits
- Calibration: External calibration
- Housing: ABS plastic
- Operating Temperature: 10° to 40°C

Model	Capacity	Readability	Pan Size
MTB 20	20kg	5g	285x560mm



APPLICATIONS

- Weighing

WEIGHT AND DIMENSIONS

- MTB 20: Net Weight - 3.2kg, Overall Dim. - 560x350x140mm (wxdxh)

ACCESSORIES

Item number	Description
700660290	Calibration certificate

FEATURES

- Vivid, backlit LCD easily visible in any lighting conditions
- Programmable backlight can be set to “always on,” “always off” or “light only when weighing”
- Colour-coded keys facilitate quick recognition of the most frequently used buttons
- Large, grade 304 stainless steel pan allows easy cleaning
- Lightweight design simplifies transport and portability
- Rugged construction stands up to industrial use
- Splash-proof housing, keypad and display mean easy cleaning
- Wall-mount bracket for placing indicator on vertical surface
- Auto power-off to save energy
- External calibration allows for verification and adjustment with weights
- Hold function freezes the displayed weight, allowing time to lapse without losing the result
- Selectable digital filtering helps minimise effects of vibration and disturbances
- Zero-tracking feature ensures display returns to zero reading



The most flexible series of scales, offering multiple configurations to suit a variety of applications

GENERAL SPECIFICATIONS

- Weighing units: kg, lb, lb:oz, oz
- Interface: RS-232
- Power Supply: 12VDC 50/60Hz 500mA adapter / Internal Rechargeable Battery
- Display: Backlit LCD with 22mm-high digits
- Calibration: External calibration
- Housing: Mild steel base / Stainless Steel Top Pan
- Operating Temperature: 0° to 40°C

Model	Capacity	Readability	Pan Size
CPWplus 35L	35kg	0.01kg	900x600mm
CPWplus 75L	75kg	0.02kg	900x600mm
CPWplus 150L	150kg	0.05kg	900x600mm
CPWplus 200L	200kg	0.05kg	900x600mm
CPWplus 300L	300kg	0.1kg	900x600mm



APPLICATIONS

- Weighing
- Display hold

WEIGHT AND DIMENSIONS

- **CPWplus 35L, CPWplus 75L, CPWplus 150L, CPWplus 200L, CPWplus 300L:**
Net Weight - 14.4kg, Overall Dim.- 900x600x78mm (wxdxh)

ACCESSORIES

Item number	Description
112001156	ATP thermal printer
3126011263	ATP thermal printer paper
3126011281	ATP thermal printer paper (pack of 10)
700200059	Non-slip rubber mat (CPWplus L only)
3074010266	RS-232 cable (null-modem)
3074010507	RS-232 to USB adapter (must order corresponding RS-232 cable)
600002028	Adam DU data collection program
700660290	Calibration certificate



600002028



700200059



112001156



OIML WEIGHT SETS



The OIML weights are individual stainless steel masses that can be used to test to the OIML standard. E2 weights offer the highest accuracy ideal for Analytical balances, followed by F1 weights which are suitable for precision balances. M1 weights are ideal for compact and bench scales that require less accuracy. OIML weight sets are a complete set of test weight that can meet the requirements for testing to OIML standards. E2 weights offer the highest accuracy ideal for analytical, F1 weights are geared towards precision balances, M1 weights offer the lowest accuracy but are more affordable and are ideal for lower cost items such as compact balances and bench scales. Cast iron weights are available in OIML M1 class, they offer higher capacities to meet the needs to calibrate larger scales.

Individual stainless steel weights

Part Number	Model	Class
700100232	E2 50g Calibration Weight	OIML E2
700100022	E2 100g Calibration Weight	OIML E2
700100023	E2 200g Calibration Weight	OIML E2
700100019	F1 1g Calibration Weight	OIML F1
700100018	F1 2g Calibration Weight	OIML F1
700100017	F1 5g Calibration Weight	OIML F1
700100016	F1 10g Calibration Weight	OIML F1
700100015	F1 20g Calibration Weight	OIML F1
700100014	F1 50g Calibration Weight	OIML F1
700100007	F1 100g Calibration Weight	OIML F1
700100012	F1 200g Calibration Weight	OIML F1
700100008	F1 500g Calibration Weight	OIML F1
700100009	F1 1kg Calibration Weight	OIML F1
700100010	F1 2kg Calibration Weight	OIML F1
700100013	F1 5kg Calibration Weight	OIML F1
700100065	M1 1g Calibration Weight	OIML M1
700100066	M1 2g Calibration Weight	OIML M1
700100067	M1 5g Calibration Weight	OIML M1
700100068	M1 10g Calibration Weight	OIML M1
700100069	M1 20g Calibration Weight	OIML M1
700100058	M1 50g Calibration Weight	OIML M1
700100059	M1 100g Calibration Weight	OIML M1
700100072	M1 200g Calibration Weight	OIML M1
700100060	M1 500g Calibration Weight	OIML M1
700100029	M1 1kg Calibration Weight	OIML M1
700100030	M1 2kg Calibration Weight	OIML M1

Cast iron weights

Part Number	Model	Class
700100024	M1 5kg Calibration Weight	OIML M1
700100031	M1 10kg Calibration Weight	OIML M1
700100032	M1 20kg Calibration Weight	OIML M1



Cast Iron Weight



Stainless steel weight sets

Stainless steel weight sets

Part Number	Model	Class
700100026	E2 1mg - 200g calibration weight set	OIML E2
700100207	E2 1g to 200g calibration weight set	OIML E2
700100027	F1 1g - 100g calibration weight set	OIML F1
700100049	F1 1g - 200g calibration weight set	OIML F1
700100042	F1 1g - 500g calibration weight set	OIML F1
700100070	F1 1g - 2kg calibration weight set	OIML F1
700100035	M1 1g - 100g calibration weight set	OIML M1
700100037	M1 1g - 200g calibration weight set	OIML M1
700100228	M1 1g - 500g calibration weight set	OIML M1
700100071	M1 1g - 2kg calibration weight set	OIML M1

UKAS Calibration certificates for weights and weight sets

OIML weight class E2

Calibration Certificate

OIML weight class F1

Calibration Certificate

OIML stainless steel weight class M1

Calibration Certificate

OIML weight set class E2

Calibration Certificate for E2 1g - 200g weight set
Calibration Certificate for E2 1mg - 200g weight set

OIML weight set class F1

Calibration Certificate for F1 1g - 100g weight set
Calibration Certificate for F1 1g - 200g weight set
Calibration Certificate for F1 1g - 500g weight set
Calibration Certificate for F1 1g - 2kg weight set

OIML stainless steel weight set class M1

Calibration Certificate for M1 1g - 100g weight set
Calibration Certificate for M1 1g - 200g weight set
Calibration Certificate for M1 1g - 500g weight set
Calibration Certificate for M1 1g - 2kg weight set

Calibration Statement: In-house available for F1 and M1 weights

Calibration Statement: In-house for F1 1g - 100g set
Calibration Statement: In-house for F1 1g - 200g set
Calibration Statement: In-house for F1 1g - 500g set
Calibration Statement: In-house for F1 1g - 2kg set
Calibration Statement: In-house for M1 1g - 100g set
Calibration Statement: In-house for M1 1g - 200g set
Calibration Statement: In-house for M1 1g - 500g set
Calibration Statement: In-house for M1 1g - 2kg set
Calibration Statement: In-house for F1 and M1 Individual weights

- For UKAS Calibration Certificates, call for delivery costs

WEIGHT TOLERANCES

OIML R111-I 2004

	Class E2	Class F1	Class M1
Nominal Size	mg	mg	mg
5000 kg	-	25,000	250,000
2000 kg	-	10,000	100,000
1000 kg	1,600	5,000	50,000
500 kg	800	2,500	25,000
200 kg	300	1,000	10,000
100 kg	160	500	5,000
50 kg	80	250	2,500
20 kg	30	100	1,000
10 kg	16	50	500
5 kg	8	25	250
2 kg	3	10	100
1 kg	1.6	5	50
500 g	0.8	2.5	25
200 g	0.3	1	10
100 g	0.16	0.5	5
50 g	0.10	0.3	3
20 g	0.08	0.25	2.5
10 g	0.06	0.2	2
5 g	0.05	0.16	1.6
2 g	0.04	0.12	1.2
1 g	0.03	0.1	1
500 mg	0.025	0.08	0.8
200 mg	0.02	0.06	0.6
100 mg	0.016	0.05	0.5
50 mg	0.012	0.04	0.4
20 mg	0.01	0.03	0.3
10 mg	0.008	0.025	0.25
5 mg	0.006	0.02	0.2
2 mg	0.006	0.02	0.2
1 mg	0.006	0.02	0.2

Tolerance for weights of denominations between those listed can be determined as follows:

- If the unit of measure is non-metric, convert the nominal value to a metric unit.
- For weights that are between those listed, the tolerance for the next lower weight shall be applied.

AdamDU - Data Collection Software



Practical Functionality – Smart Features

- Monitor and collect data readings for up to 8 balances or scales simultaneously.
- Record custom data or notations along with readings using up to 6 user-defined fields.
- Log calibration reports to file for maintaining complete calibration records.
- Collect date and time with readings.
- Collect balance serial number with readings for unique identification. (Feature may not be available with all balances and scale).
- Configure AdamDU to remember individual session settings and file names.

Statistics and Graphing

- View statistics including Min, Max, Median, Mean, Variance, and Standard Deviation.
- Graph readings in real time. Print results and graphs from within the AdamDU application.
- Quickly search for a specific reading, min, or max readings

Easy Data Management

- Dynamically export readings in several file formats (text, CSV, HTML, XML) for importing to other systems or applications.
- Export captured readings automatically to Microsoft® Excel¹ or Microsoft® Word¹ for further analysis or reporting.
- Export captured readings to Windows® Clipboard for quick pasting in Windows® applications.



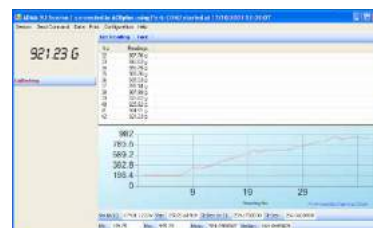
The Commander window lets you view data for up to 8 balances or scales on one screen for an overview of the active data sessions.

¹You need a licensed copy of Microsoft® Word and Microsoft® Excel to use this facility

Microsoft Word, Microsoft Excell, Microsoft and Windows is a registered trademark of Microsoft Corporation in the United States and other countries.



Six user-defined fields are available for custom data entry with each reading. Custom data can be exported with the weighing data.



Real time graphing and statistics are easily viewable in the data grid. Balance control buttons let you request data or tare the balance right from the software.

Part Number	Model
600002028	Adam DU software

Anti-Vibration Table



General Specifications	
Overall dimensions (wxdxh)	800mm x 600mm x 782mm
Work surface dimensions	400mm x 450mm
Weight of work surface	49kg
Total Weight	77kg

FEATURES

- Scratch resistant granite slab
- Two table construction keeps the granite slab in the middle and reduces interference
- Large working surface of 400mm x 450mm
- Working surface around the vibration slab for resting samples
- Adjustable levelling feet for uneven surfaces

Part Number	Model
104008036	Anti-vibration table

Hard Carry Cases



CPWplus



CBK / CBC / AZextra



HCB & CQT

General Specifications			
Carry Case Model	CPWplus	CBK/CBC/AZextra	HCB & CQT
Overall dimensions (wxdxh)	480mm x 390mm x 150mm	472mm x 445mm x 190mm	483mm x 362mm x 152mm

FEATURES

- Light weight and scratch resistant outside
- Foam padded interior for a snug fit
- Rugged construction keeps the scale safe
- Key lock latches for security
- Non-slip rubber feet

Part Number	Model
700100099	Hard Carrying Case - CPWplus
302000001	Hard Carrying Case - CBK/CBC/CBD/AZextra/CCEU
308002042	Hard Carrying Case - Highland®/Core®

DDK Density Determination Kits - for Eclipse and Nimbus 0.1mg and 1mg models only



The density determination kit consists of apparatus which allows the user to weigh a sample in air and then weigh the sample in water or another liquid with a known density. The Adam DDK Kit allows for densities to be determined for solid and liquid samples.

The software in the balance takes the operator through the process and finally displays the resultant density on the LCD in g/cm^3 , compensating for temperature and for the use of alternative liquids when calculating the density of solids or liquids.

THE KITS CONSIST OF:

- Glass beaker
- Suspended weighing cradle to replace the standard pan
- Independent support for the beaker
- Thermometer with clip
- Glass sinker of known volume for the determination of liquid density

Part Number	Model
1060012713	Density Kit - 90mm
1060012714	Density Kit - 120mm and 160mm

ATP Thermal Printer

Technical Specifications

Model	ATP Thermal Printer
Power Supply	External power adapter 110/220 VAC - 8.5 VDC OUT
Baud Rates	Selectable from 2400 to 115200
Data Bits	8
Parity	None
Operating Temperature	0°C to + 45°C
Housing	ABS plastic housing
Overall Dimensions (WxDxH)	4.5" x 7.2" x 3.5" / 114mm x 184mm x 90mm
Net Weight	1.7lb / 0.76kg with paper roll installed



FEATURES

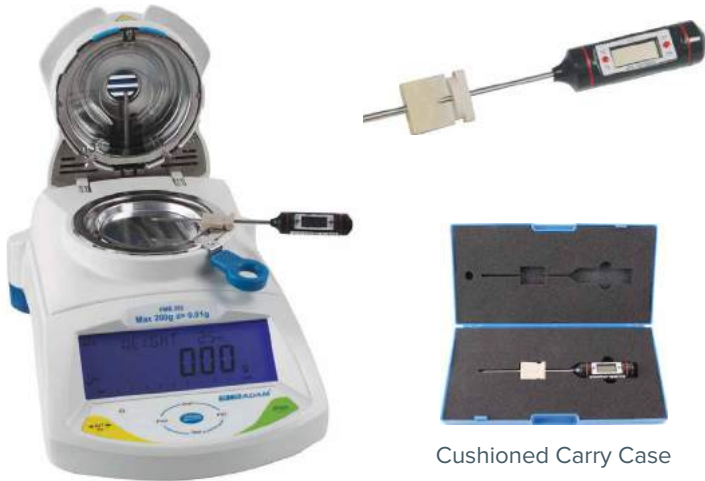
- Interface capabilities: serial port
- Support for up to 26 international character sets
- Print size 24 x 24 dot
- Column size 384 dots per line
- Print speed 50mm / sec
- 57.5mm paper width
- Selectable baud rates
- LED indicators to show power,error and when out of paper

ACCESSORIES

- No. 3126011263 Thermal paper
- No. 3126011281 Thermal paper (10pk)

Part Number	Model
1120011156	ATP Thermal Printer
3126011263	ATP Thermal Printer Paper
3126011281	ATP Thermal Printer Paper (pack of 10)

PMB Temperature Calibration kit



Cushioned Carry Case

Technical Specifications

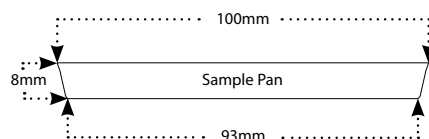
Model	PMB Temperature Calibration Kit
Power Supply	Battery - 1.5v DC
Display Value	0.1°C
Operating Temperature	-50°C to 300°C

Part Number	Model
1070010636	Temperature Calibration Kit

PMB Moisture Sample Pans



Available in packs of 250



Technical Specifications

Model	PMB Sample Pans
Pan Size	100mm ø Top - 100mm - wide Depth - 8mm - height Bottom - 93mm - wide
Pan Material	Aluminium

Part Number	Model
307140001	Disposable Sample Pans (pack of 250)

PMB Glass Fibre Pads



FEATURES

- 90mm wide glass fibre pads
- Borosilicate glass micro fiber with a density of 80g/M2
- Binder free with a constant tare weight
- Prevents skin from forming on the sample surface

Part Number	Model
3070013622	PMB Glass Fibre Pads (pack of 200)

AE402 / Warrior® Relay Box



FEATURES

- 4 switches can be programmed to operate with the checkweighing functions
- Relays can be set up to drive 115/230VAC 1A or 24VDC 1A output
- Input from user equipment can be accepted at 15-25VDC or 12-25VAC to power the relay circuit
- Supplied with 12VDC 500mA adapter
- Work with AE 402, Warrior, ABK and AFK models

Part Number	Model
1100011297	Relay Box

GLOSSARY

Accumulation

A weighing function that allows the device to sum a series of weighings.

Accuracy

The degree to which sample weight conforms to a standard (calibration mass). Accuracy is the ability to display a value that matches the ideal value for a known weight. It is a function of repeatability, linearity and off-center loading.

Analytical Balance

A balance that weighs very small quantities in very tiny increments. Usually refers to sub-milligram weighing results.

Animal Weighing

A weighing mode featured on some balances and scales for weighing animals or samples that have fluidity or movement. The balance or scale works out an average weight based on the force exerted by the animal or sample over an extended period of time. Once the internal calculation is completed by the balance, it will hold the value.

See *Dynamic Weighing*.

Auto zero tracking

Display automatically zeros to adjust for slow drift or changing environments.

Balance

A weighing machine. The terms scale and balance are often used interchangeably. Historically a balance was a device that determined mass by balancing an unknown mass against a known mass as with a 2 pan assay balance. In modern weighing machines balances are usually of the design that uses a force restoration mechanism to create a force to balance the force due to the unknown mass.

Below balance weighing

A hook or connection point on the bottom of the balance that suspends items for weighing. Generally used for specific gravity/density applications.

Calibration

A procedure that enables the balance or scale to be reset to a known standard mass.

Calibration mass

A mass that meets certain standards and of a known value that is used to calibrate a balance to ensure accuracy.

Capacity

The maximum weight that can be placed on the scale or balance.

Checkweighing

A function that compares the current weight to a predetermined setting and indicates if the load is below, above, or within an acceptable range.

Check counting

A function that allows you to use the scale to verify the number of pieces counted.

Compact Balance

A small digital balance, usually portable, for basic weighing in classrooms or other settings.

Date

The balances can be programmed to display and print the date on which the weighing operations were carried out.

Density Determination

Using a balance to determine the density of material, either solids or liquids. (Density is a measure of mass per unit volume). If a solid material is used it is weighed in air and then suspended in a liquid and weighed again. The density can be determined either manually or automatically calculated by software in some balances. To determine the density of a liquid a special float of known volume is weighed in air and in the liquid.

Digital filters

Filters can help reduce the influence of draft or vibration, enabling the balance to display a stable reading more quickly.

Dynamic Weighing

A weighing mode featured on some balances and scales for weighing animals or samples that have fluidity or movement. The balance or scale works out an average weight based on the force exerted by the animal or sample over an extended period of time. Once the internal calculation is completed by the balance, it will hold the value. See *Animal Weighing*.

External Calibration

The calibration process of a balance using a known external weight often referred to as suggested calibration weight.

GLP

Good Laboratory Practice or GLP generally refers to a system of management controls for laboratories and research organisations to ensure the consistency and reliability of results. The laboratory balances facilitate GLP Print outs with traceability in terms of date, time, balance ID number, etc.

GLP/GMP printout capability

Program that provides a specific set of information on the balance and the sample weight, conforming to Good Laboratory/Manufacturing Practices.

Indicator

Device on which the weighing or counting results are displayed. The scale or balance can often be programmed for a variety of applications and or weighing units, through the software accessed through indicator.

Internal Calibration

The calibration process using an internal weight available inside the balance for automatic calibration as determined by the user: upon temperature changes, at periodic time intervals, or when desired by the user.

Ingress Protection (IP) Rating

The IP rating is defined in international standards IEC 60529 and is a rating for the protection from outside objects like dust and water. In basic terms it certifies that the scale or balance is washdown or if it can be used in a wet environment.

Linearity

The ability of a scale or balance to show the correct value throughout the weighing range. Usually tested by placing known weights on the balance from near zero to full capacity.

Mass

Mass is a physical property of a material. The mass gives a material weight when gravity pulls the material toward earth. The units of mass are gram and kilogram. The terms mass and weight are often used interchangeably.

GLOSSARY

Moisture Analyzer/Moisture Balance

A weighing device that is used to weigh samples before and after drying, to determine the appropriate ingredients, correct water level, or product shelf life, among other things. Often used in product development in a wide variety of industries, as well as in sewage disposal, waste water disposal, etc.

Moisture determination

Balance function that calculates moisture percentage by comparing an initial sample weight to the same sample's weight after drying.

Net weight

Weight of the load on the pan minus the container (tare) weight.

Net total formulation

Balance function that automatically adds the individual weights of several components and displays the total.

Off Center Loading

The ability to display the same value when a weight is placed anywhere on the weighing platform. Tested by weighing in the center of four quadrants on the platform. Also called eccentric loading or shift test.

Parts Counting

A weighing application that uses a scale to determine the number of parts of the same mass, placed on the platform, based upon the average piece weight (representative sample). The piece weight is either entered by the user or determined by weighing a sample on the scale.

Percentage Weighing

Using a balance to determine the weight of an item as a percentage of a reference weight. Weighing application that uses a preset reference weight to equal 100 percent — the balance displays the sample weight in a percentage, relative to the reference value.

Precision Balance

A balance used to weigh quantities to a very precise number, usually up to 1 milligram. Precision balances come in a wide variety of capacities and pan sizes.

Readability

How well a scale displays the correct results. Readability is the value of the finest division of the scale.

Repeatability

The degree of agreement between repeated measurements of the same mass on the same balance, under the same conditions.

Resolution

The total number of scale divisions available in that device. *See also: Accuracy, increment, readability.*

RS-232

A method of sending data over wires. Often used to communicate between balances and printers or computers. Some scales and balances capable of data communication use RS-232 cables to connect to peripheral devices.

Scale

A weighing machine. The terms scale and balance are often used interchangeably. Historically a scale was a device that displayed weight by measuring a deflection, such as a spring scale. In modern weighing machines scales are usually using springs. Weighing devices with strain gauge load cells are sometimes referred to as scales. *See also Balance.*

Security bracket

A bracket integrated with the balance to physically lock the balance to secure it from theft or re-location.

Specific Gravity

Specific Gravity is a dimensionless quantity. It is the ratio of density of a substance to the density of reference substance (water, air, alcohol, etc.). *See Density Determination.*

Stability

The point at which results do not change after a weight has been added to the platform.

Stability indicator

A feature or symbol on the display that shows when the balance has determined the value displayed will no longer change.

Strain Gauge Load Cells

A method to determine mass using a mechanical component that is deflected by the addition of an unknown mass. The amount of deflection is measured by resistive elements (strain gauges) mounted on the mechanical component.

Tare

To set a display to show zero weight. This is used to remove the weight of any packing or containers so that only the weight of the material within the container is shown. The Tare value is subtracted from the remaining weight added to a scale. For example if a scale has capacity of 500g and then 200g is tared, the remaining capacity is 300g. Zero is frequently used interchangeably with 'tare'.

Tare weight

The weight of a container or package that should not be taken into account when weighing a sample.

Time

The balances can be programmed to display and print the time at which the weighing operations were carried out.

Totalization

The ability of a balance to store the total weight from a number of weighings.

Weighing

To find the weight (mass) of an unknown against a standard known mass.

Weighing unit

The unit measure that a balance can be set to display for the weight of an unknown mass such as Grams, Kilograms, Milligrams, Pounds, Ounces, Carats, Grains, Newtons, etc.

Weight

The weight of an object is the result of gravity pulling a mass toward earth. When a balance has been calibrated using a known mass then any unknown mass placed upon the scale will have a weight proportional to the known mass. A weight can also be any mass that is used, for example to put a weight on the scale.

Zero

To set the display to show zero weight. Used to reset the zero condition of a scale when small amounts of material are on the platform. Zero does not take away from the capacity of a scale. However it will only work in a very small range around the original zero condition for the scale. Zero and Tare are often combined on one key, the terms are often used interchangeably.

www.adamequipment.co.uk

Adam Equipment Co. Ltd.

Maidstone Road,
Kingston,
Milton Keynes,
MK10 0BD
United Kingdom

Phone: +44 (0)1908 274545

Fax: +44 (0)1908 641339

E-mail: sales@adamequipment.co.uk

UK ROW-6127

Adam Equipment follows a policy of continuous improvement and reserves the right to change specification and pricing without notice.
Adam Equipment's standard terms and conditions of sale apply. Errors and omissions excepted.

©Adam Equipment. All rights reserved.