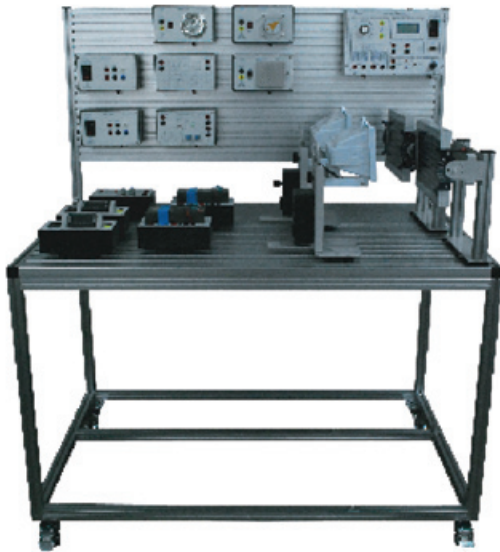


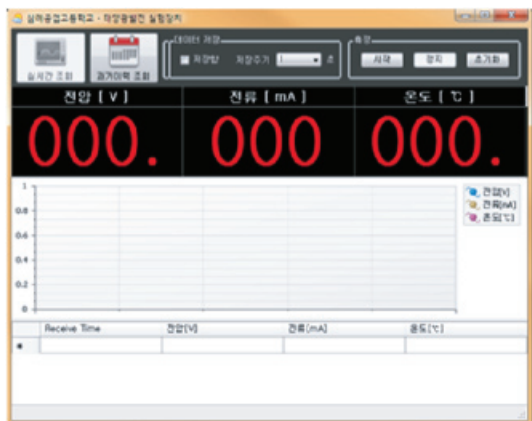
CP-S30

Energy Conversion Trainer



FEATURES

- Miniaturized solar PV system designed for indoor practices using the artificial solar source
- Capable of converting data values of voltage, current and temperature into Excel data and showing them in graphs
- Three types of breadboard module for designing the charging controller, boost converter and inverter
- PC software program for monitoring and analyzing solar PV generation



EXPERIMENTAL CONTENTS

- Principles of solar PV power generation
- Measurement of voltage/current/temperature using software
- Ohm's Law and simulation of photoelectric effects
- Series and parallel connections of Solar PV Cell Modules
- Shading practice using the 5W Solar PV Cell Modules
- Characteristics of battery charge and discharge with Battery Module
- Characteristics of inverter with load or no-load
- Circuit design practices using a breadboard

PRODUCT COMPOSITION

- 5W Solar PV Cell (2ea)
- 300W Light Source (2ea)
- Charger Module (1ea)
- Inverter Module (1ea)
- AC Lamp Module (1ea)
- Motor Module (1ea)
- Variable Resistor Module (1ea)
- Buzzer Module (1ea)
- Data Collection Module (1ea)
- SMPS Module (1ea)
- Battery Module (1ea)
- AC Voltmeter Module (1ea)
- AC Ammeter Module (1ea)
- Breadboard A: Charging controller (1ea)
- Breadboard B: Boost converter (1ea)
- Breadboard C: Inverter (1ea)

EXPERIMENTAL MODULES

5W Solar PV Cell Module	300W Light Source Module	Charger Module	Inverter Module
			
AC Lamp Module	Motor Module	Variable Resistor Module	Buzzer Module
			
Data Collection Module	SMPS Module	Battery Module	AC Voltmeter Module
			
AC Ammeter Module	Breadboard - A type	Breadboard - B type	Breadboard - C type
	Charging controller (Option) 	Boost converter (Option) 	Inverter (Option) 

STANDARD ACCESSORIES

- Power cord : 1ea
- 4mm connection cable : 1set
- PC software program CD : 1ea
- User's guide manual: 1ea
- Experimental manual: 1ea