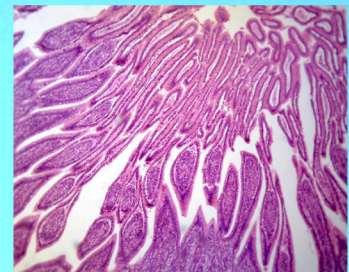




# LABOMED, INC.

www.labomed.com  
spectro@labomed.com



## LB-1280 Compound LCD Digital Microscope (2.0MP) with Infinite Optical System

The LB-1280 LCD digital microscope is a new generation microscope that with an embedded operation system WinCE 5.0, it can link mouse or keyboard, just like a micro computer. It supports 100M Ethernet network, WI-FI wireless network and can communicate with a remote PC. With 8.4 Inch TFT touching screen, friendly man-machine interface, multiple peripheral interfaces and powerful processing function, make it very easy to operate. It can be widely used in various optical micro fields, such as teaching, biological and medical researching, electronic components inspection and so on.



www.labomed.com  
spectro@labomed.com

## LB-1280 Compound LCD Digital Microscope (2.0MP) with Infinite Optical System

### Introduction

LB-1280 LCD Digital Microscopes is a wholly new generation microscope system that has an embedded system. With a 8.4" TFT screen, it works like a computer. You can take photos, take videos and take measurement on the machine. With W-LAN and LAN function, you can directly connect the microscope into the internet. Then you can transfer the images and videos to remote places. With a friendly man-machine interface, powerful processing function (real-time preview, dynamic calibrating and measuring), multiple peripheral interfaces, easy to operate and comfortable mechanical design, it is your best assistant in teaching, electronic inspection, biological and medical research!

### Applications

With LCD Screen and data remote transfer function, this wonderful LCD digital microscope can be used in high level laboratories and universities for teaching, biological and medical research, it also can be used for electronics, circuit board and other industrial inspection.

### Technical Specifications

Digital Part:	2.0 Megapixels CMOS Sensor W-LAN and LAN function
Viewing Head:	Seidentopf binocular head, 30° inclined, Interpupillary 48-75mm
Eyepiece:	Wide Field Eyepiece EW10×/ 18
Objective:	Infinite Semi-Plan Achromatic Objective 4×、10×、40×、100×
Nosepiece:	Quadruple Nosepiece
Stage:	Double Layers Mechanical Stage 140mm×140mm/ 75mm×50mm
Condenser:	Sliding-in centerable condenser NA12.5
Illumination:	LED Illumination, Adjustable Brightness 6V/ 20W Halogen Lamp Illumination, Adjustable Brightness (optional)
LCD Screen:	8.4 Inch TFT Touching screen
Output:	USB2.0、 AV and VGA Output,100M Ethernet interface
System:	Windows CE 5.0, compact embedded operating system
Software:	NMS(microscope software) & NMS Client(computer software) with measurement function and reticle ruler
SD Card:	Expandable to Max 2GB Kinston SD Card (optional)
Network:	With Wi-Fi function connection

### Dimensions

